



SMDG

9 October 2018

THE MSC GROUP OF COMPANIES

CARGO DIVISION



PASSENGER DIVISION



© Copyright SMDG e.V www.smdg.org

© Copyright MSC Mediterranean Shipping Company S.A. Ottonello

Sensitivity: Public

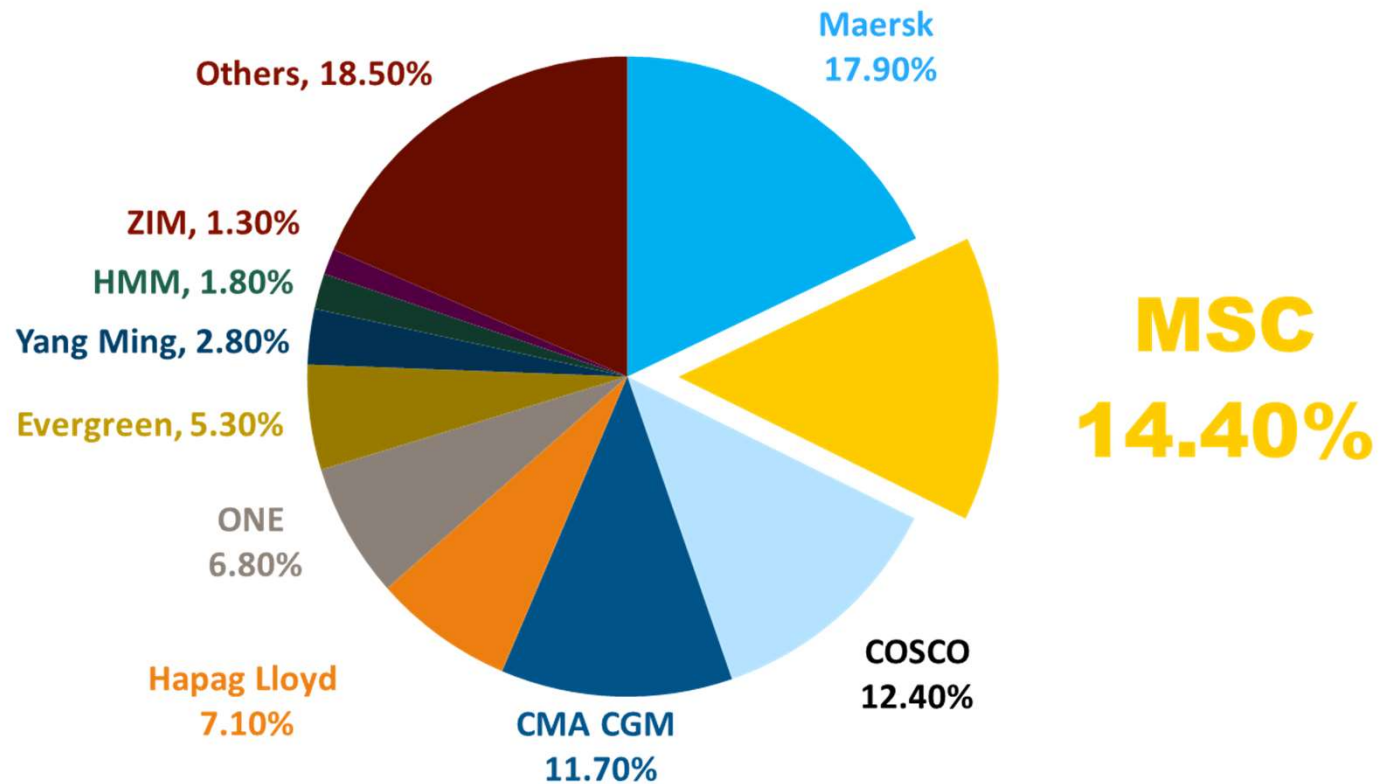
A UNIQUE WORLDWIDE PRESENCE



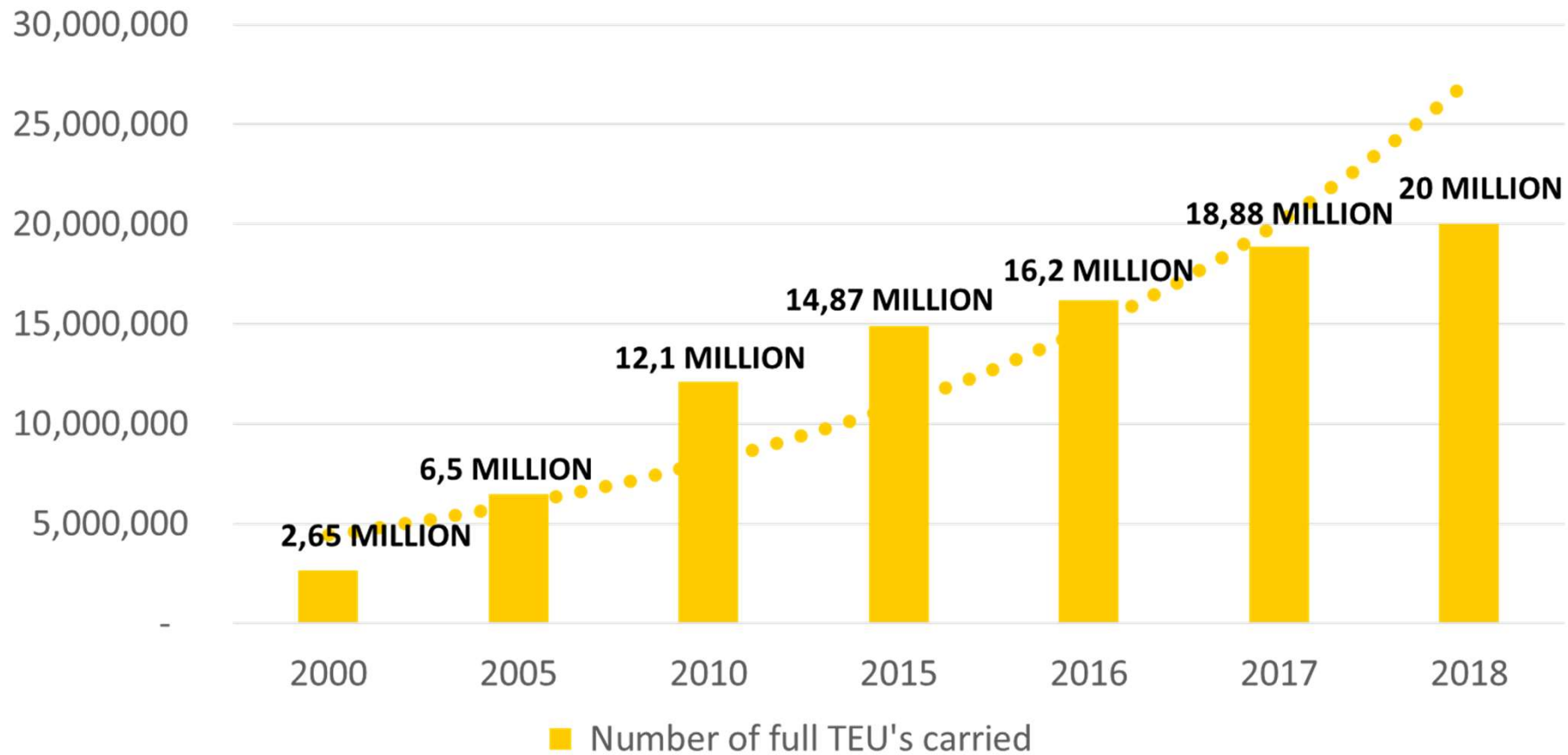
MSC, A WORLD LEADER IN GLOBAL TRANSPORTATION



GLOBAL CAPACITY SHARE



MSC CARRYING CAPACITY IN CONSTANT GROWTH





DEPOTS & WAREHOUSING

MAINTENANCE & REPAIR

TRUCKING SERVICES



© Copyright SMDG e.V www.smdg.org
© Copyright MSC Mediterranean Shipping Company S.A. Ottonello

RAIL SERVICES

BARGE SERVICES

REEFER CONTAINERS

MEDLOG

Transport & Logistics

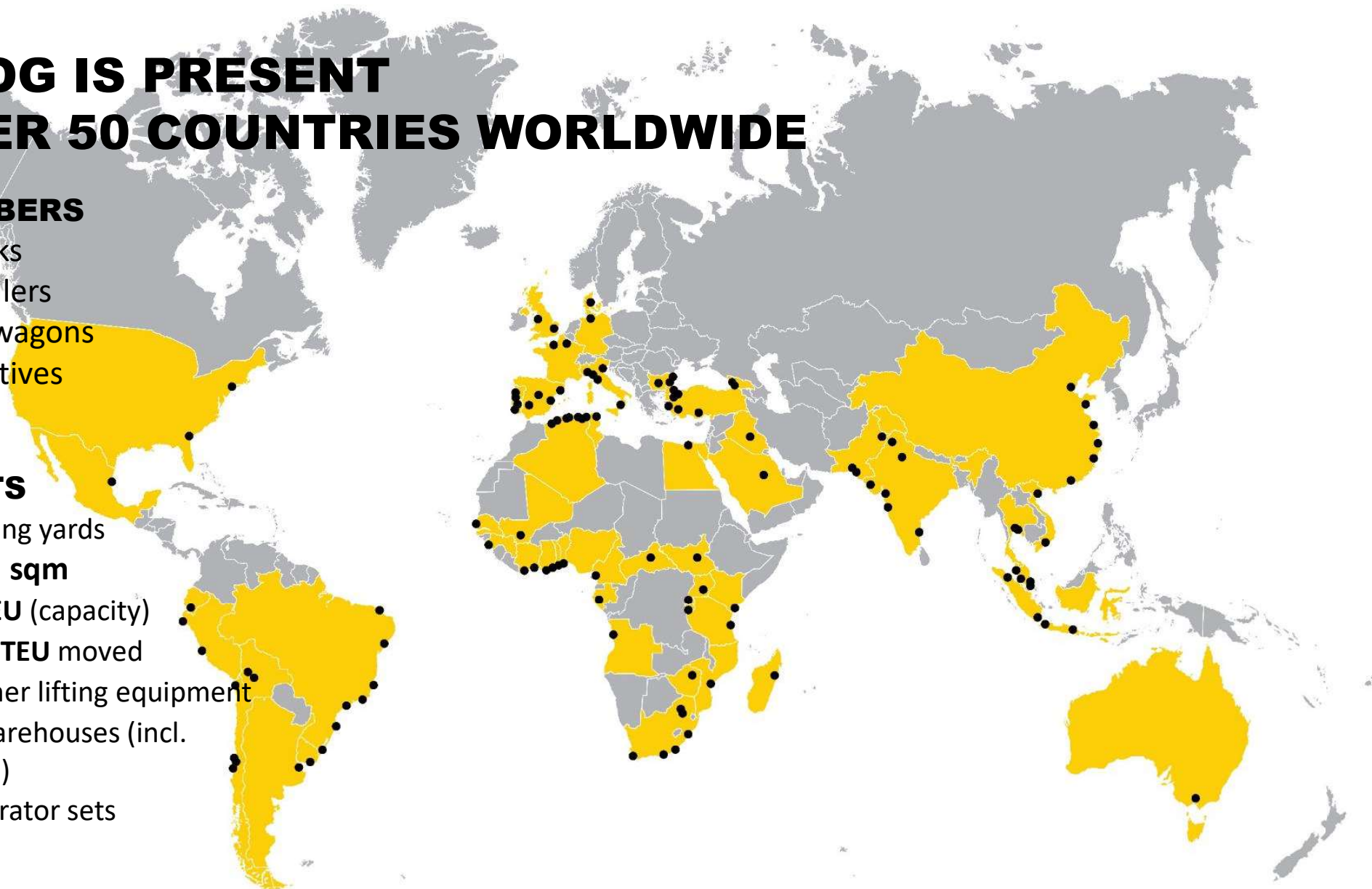
MEDLOG IS PRESENT IN OVER 50 COUNTRIES WORLDWIDE

KEY NUMBERS

- 5,000 trucks
- 10,000 trailers
- 4,000 rail wagons
- 68 locomotives
- 18 barges

DRY PORTS

- 118 operating yards
- 4.5 million sqm
- 500,000 TEU (capacity)
- 10 million TEU moved
- 454 container lifting equipment
- Over 40 warehouses (incl. refrigerated)
- 1,200 generator sets



DRY PORTS & OFF-DOCK DEPOTS



15 DRYPORTS

25 OFF-DOCK DEPOTS

GENOA

220,000 m²

30,000 TEU capacity

GIOIA TAURO

REEFER SERVICES

45 technical operators

5 reefer operators

REPAIR

40 reefer containers/week

LA SPEZIA

56,000 m²

5,600 TEU capacity

LEGHORN

70,000 m²

6,500 TEU capacity

NAPOLI

189,000 m²

15,700 TEU capacity

VENEZIA

130,000 m²

6,000 TEU capacity



© Copyright SMDG e.V www.smdg.org

© Copyright MSC Mediterranean Shipping Company S.A. Ottonello

Sensitivity: Public

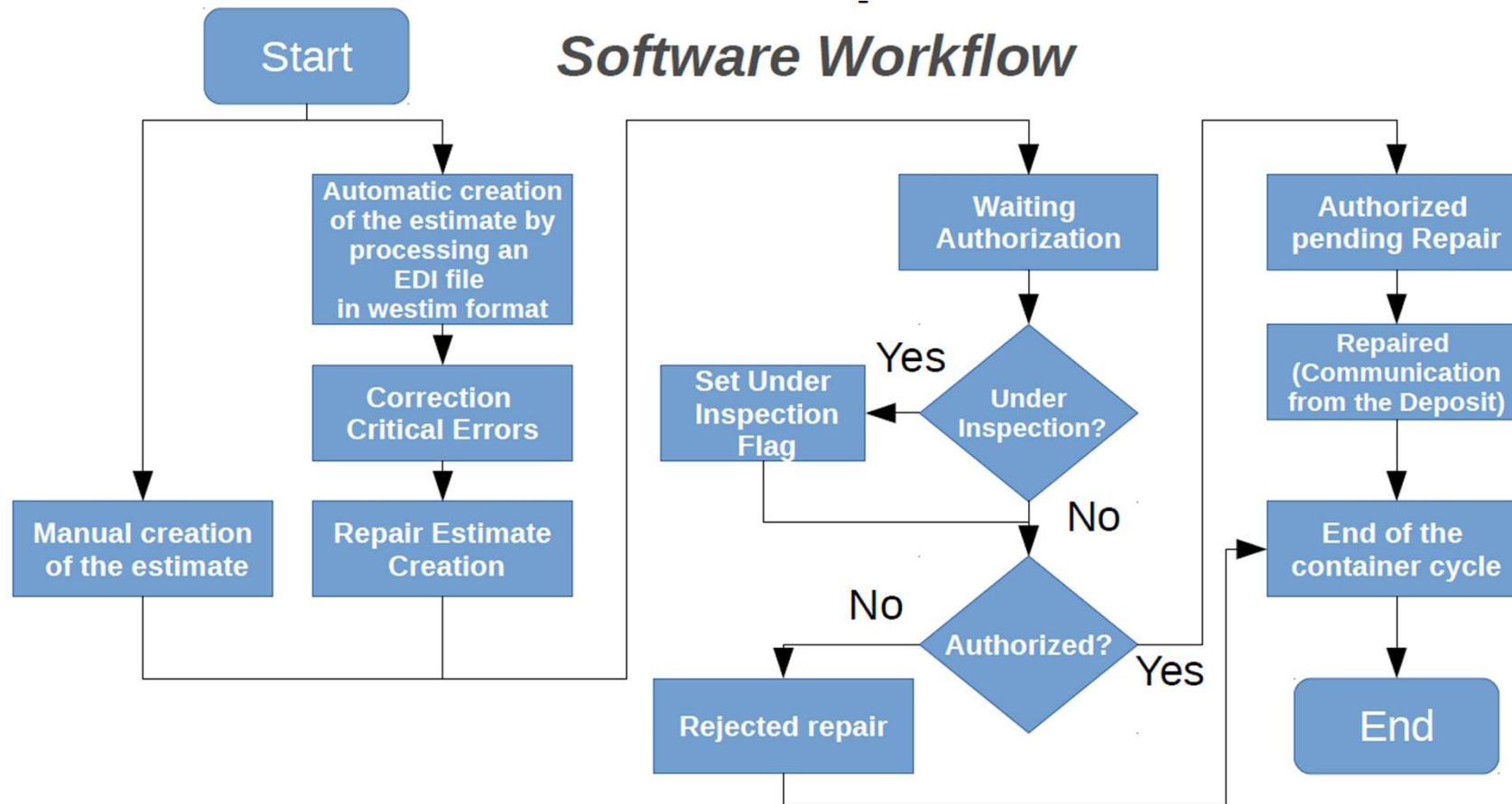
- M&R, Logistic Service
- TECHNICIANS, PARTNERS
- DRYPORTS, OFF-DOCKS



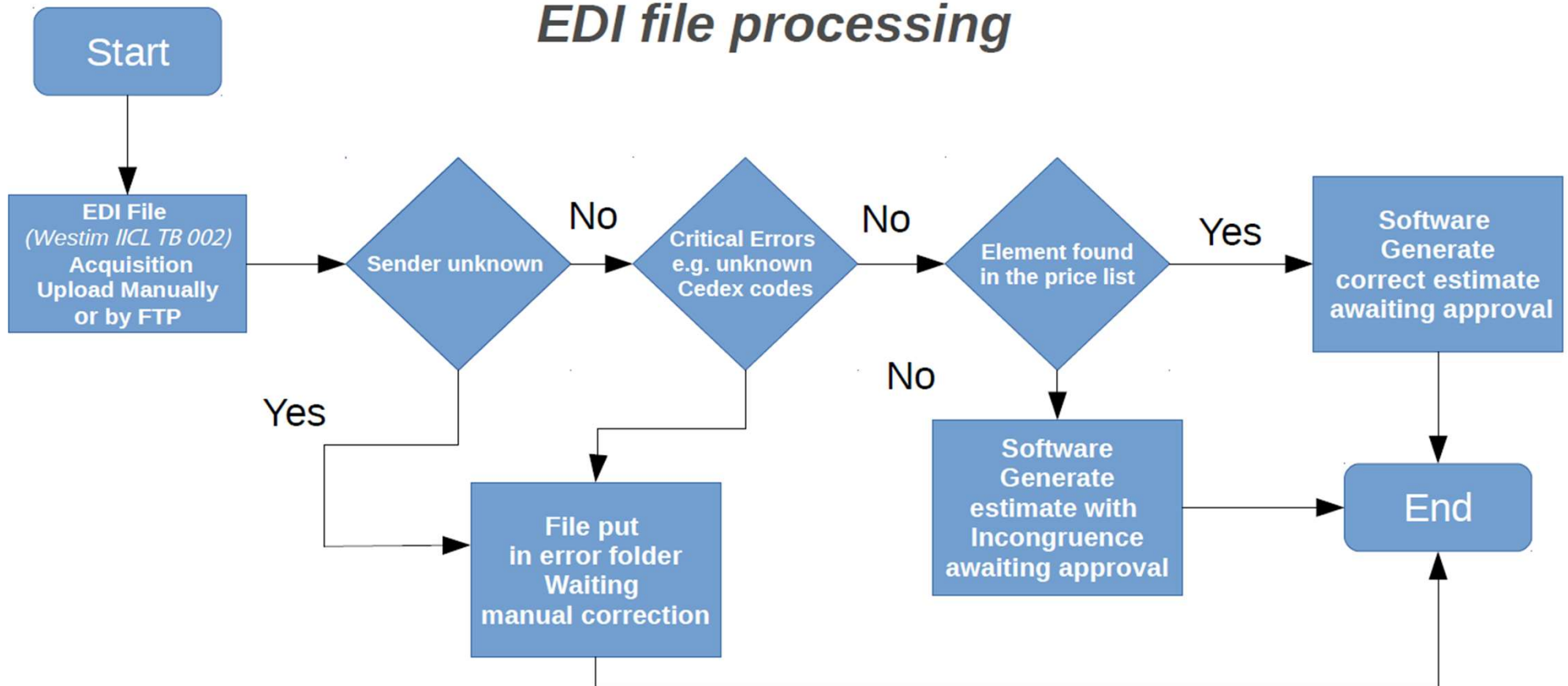
- REPAIR SHOP Database
- CONTAINER TYPE
- PRICE LIST
- GENERAL PURPOSE CONTAINERS
- REFRIGERATED CONTAINERS
- B2B MESSAGE SETS

B.I.C. LOCODE Project

ISO 9897 CEDEX Codes



EDI file processing



- CODECO → OFF-DOCK DEPOTS TO CARRIER
- WESTIM → REPAIR SHOP TO CARRIER
- DESTIM → REPAIR SHOP TO CARRIER
- WORDER → CARRIER TO REPAIR SHOP

1989

UN\EDIFACT PROTOCOL

WESTIM

&

WESTIMDT

1997

UN\CEFACT

DESTIM

DESTIM

- LEASING COMPANIES interest
- CUX segment in DESTIM substitute ACA in WESTIM
- CUX don't permit to the franchise repair operations
- WESTIM have ERI and ECI that identify YEAR of BUILT and CONDITION
- DESTIM maybe can be substitute with «creative use» of DTM and FTX but doesn't use a standard .
- NO POSSIBILITY to insert the DAMAGE responsibility of a each DAMAGE event but only to the total amount internally to the NAD but at this moment isn't used .

WESTIM

- **NO PART NUMBER**

PAR+PART NUMBER

- **DAMAGE CATEGORY**

FTX+DAMAGE CATEGORY CODE+DESCRIPTION OF INTERVENTION

DAMAGE CATEGORY CODES

- CL Cleaning
- FQ Food Quality Upgrade
- ID Impact Damage
- IR Improper Repair
- MP Missing Part
- WT Wear and Tear Damage

WESTIM STANDARD NOT STANDARD



WAR+
COS+
PAR+22-50078-28'
FTX+CL+ CHEMICAL WASHING'
IDP+001131'

IDP

identify the proprietary code

It simplify the process combining the quotation line with the Price List



**OUR HISTORY
OUR PEOPLE
OUR FAMILY**

**TOGETHER,
WE ARE MSC.**

m
sc