



**User Manual**  
(Implementation Guide)

**UN/EDIFACT MESSAGE**

**COPRAR**  
(Container discharge/loading order)

**Version 1.6 - 2**

**D.95B**

Version:	1.6 - 2
Date:	May 2016
Source:	SMDG User Group for Shipping Lines and Container Terminals

© SMDG

Information in this document is subject to change without notice.

The SMDG claims full copyright to this manual and its contents, however, the manual may be copied and used by anyone, without the consent of SMDG.

**It is not allowed to change the contents of this manual!**

## Revision History

Version	Date	Author(s)	Revision Notes
1.2	March 2003	SMDG	Created version
1.6	October 2015	Paul Wauters	Extended for Gross Weight Verification
1.6-1	January 2016	Paul Wauters	Updated UNECE official codes/qualifiers
1.6-2	May 2016	Paul Wauters	Streamlined additions with existing info

## CONTENTS

0.	Introduction .....	3
1.	General .....	3
2.	Status Indicators and Usage Indicators....	4
3.	Document Maintenance.....	5
4.	Versions .....	6
5.	Segment Table .....	7
6.	Message Structure Diagram .....	9
7.	Message Description .....	13
8.	Sample Message .....	65

## 0. INTRODUCTION

This User Manual has been developed by the SMDG User Group for Shipping Lines and Container Terminals, a “Global User Group” under the auspices of UN/CEFACT.

This User Manual is based upon the UN/EDIFACT D.95B directory and the ITIGG document “Principles and Rules for the implementation of transport EDI messages – Transport Equipment Movements – Maritime-related container messages”, version 1.3.1, dated September 1996.

This User Manual provides guidance as to the recommended usage of codes, qualifiers, data elements, composites, segments and groups of segments in the D.95B COPRAR message. The intention is to assist developers to ensure consistent use of the COPRAR message throughout the worldwide trade and transport community.

## 1. GENERAL

### Formal Definition

"A message to order to the container terminal that the containers specified have to be discharged from a seagoing vessel or have to be loaded into a seagoing vessel. This message is part of a total set of container-related messages. These messages serve to facilitate the intermodal handling of containers by streamlining the information exchange. The business scenario for the container messages is clarified in a separate document, called “Guide to the scenario of EDIFACT container messages”.

The COPRAR message is used to transmit an order to load containers or other equipment on or discharge containers from a seagoing vessel. This message is commonly sent by the shipping line (or its agent) to the terminal operator handling the vessel.

The term equipment in this manual includes not only supporting items (e.g. reefer generator) but also uncontainerised cargo (break bulk).

A message contains information on only one conveyance of a seagoing container vessel either arriving or departing. One order message does not necessarily cover all containers to be discharged/loaded, this being the case if two or more liner agents or ship-owners supply orders to the terminal referring to one vessel conveyance.

The COPRAR message as loading order can include the order to load empty containers which cannot be identified by their full prefix and serial numbers.

In this case a combination of size and type and/or a certain range of equipment serial numbers (container prefix and numbers) can be given for a group of one or several containers.

The COPRAR message as discharge order can also include information relating to transshipment (= import of transshipment containers): on the same terminal containers can be discharged from vessel X and loaded into vessel Y. In addition to containers to be loaded or discharged, the COPRAR message may also be used to transmit details on containers that are to be shifted on board the vessel or containers that are to be discharged and reloaded (re-stowed) onto the vessel.

## 2. STATUS INDICATORS AND USAGE INDICATORS

### Status Indicators

Status Indicators (“M” and “C”) form part of the UN/EDIFACT standard and indicate a minimum requirement to fulfil the needs of the message structure. They are not adequate for implementation purposes. The Status Indicators are :

<i>Value</i>	<i>Description</i>
M	Mandatory The entity marked as such must appear in all messages, and apply to these messages as well as to any associated implementation guidelines (and consequently is also a Usage Indicator).
C	Conditional The entity is used by agreement between trading partners.

### Usage Indicators

Usage Indicators are implementation–related indicators that further detail the use of “Conditional” Status Indicators. Usage Indicators are applied at all levels of the guidelines and shown adjacent to data items such as segment groups, segments, composite data elements and simple data elements. They dictate the agreed usage of the data items or entities. The Usage Indicators are :

<i>Value</i>	<i>Description</i>
M	Mandatory Indicates the item is mandatory in the UN/EDIFACT message.
R	Required Indicates the item must be transmitted in this implementation.
D	Dependent Indicates that the use of the item is depending on a well-defined condition or set of conditions. These conditions must be clearly specified in the relevant implementation guideline.
O	Optional Indicates that this item is at the need or discretion of both trading partners.
X	Not Used Indicates that this item is not to be used in this implementation.

Where an item within a segment group, segment or composite data element is marked with Usage Indicators “M” or “R”, but the segment group, segment or composite data element has been marked “O” or “D” (or for that matter “X”), the item is only to be transmitted when the segment group, segment or composite of which it is a part, is used.

### 3. DOCUMENT MAINTENANCE

The data content of this document has been prepared and approved by SMDG and no alteration may be made to the content of this document without reference to and approval of SMDG.

Any remarks, questions, amendments or requested alterations to this document are to be addressed to :

SMDG Secretariat  
Seattleweg 7  
3195 ND Rotterdam – Pernis  
The Netherlands

Phone: +31- (0)10 - 2941100  
Fax: +31- (0)10 - 2941105  
E-mail: [secretariat@smdg.org](mailto:secretariat@smdg.org)  
WWW [www.smdg.org](http://www.smdg.org)

Paul Wauters  
c/o PSA Antwerp / Cosmos NV.  
Napelsstraat 79  
2000 Antwerp  
Belgium

Phone: +32 – (0)3 2607056  
Facsimile: +32 – (0)3 2606161  
E-mail [paul.wauters@globalpsa.com](mailto:paul.wauters@globalpsa.com)

## 4. VERSIONS

SMDG16.

Version 1.6 (SMDG16), first released October 2015, is the successor of version 1.2 (ITIG12), released October 1996, includes amendments for transmission of data specifying a container's verified gross mass (VGM) according to SOLAS regulation 2, chapter VI, paragraphs 4 to 6.

With a short deadline (July 2016) it was decided to do minimum changes - what was considered as an absolute (legal) minimum - to limit the impact on EDI and backend systems of different organizations. It was decided to make additions in the current version without structure changes via existing segments and data elements. Only necessary new qualifiers and/or codes will be requested via DMR.

To handle the new SOLAS requirements on Gross Mass Verification, DMR (Data Maintenance Request) for new codes, to handle the new entities, will be submitted to UN/CEFACT.

The acceptance of these DMR's are available as from version D.15B The Message Implementation Guides can use 'Temporary' codes indicated between square brackets [xxx] and codes only available in a later version.

Changes for SOLAS in this manual: (codes used as available from UN/EDIFACT version D.15B.)

### **EQD group segments additions:**

MEA – Measurements

**VGM** – Verified Gross Mass (weight)

NAD – Name and Address

**AM** – Authorized official – person signing for Verified Gross Mass

**SPC** – SOLAS Packed Container Verified Gross Mass Responsible party

DTM – Date/Time

**798** - Verified gross mass determination date/time - Date/Time when a gross mass (weight) of a packed container was obtained according to SOLAS chapter VI, regulation 2, paragraphs 4-6

FTX – Free text (ABS) container condition – SMDG maintained codes

**SM1** – Solas Method 1 – Verified Gross Mass obtained by weighing

**SM2** – Solas Method 2 – Verified Gross Mass obtained by calculation

RFF – References

**VGR** – Verified Gross Mass Reference – link to VGM information

# COPRAR - Container Discharge/Loading Order Message

## Introduction:

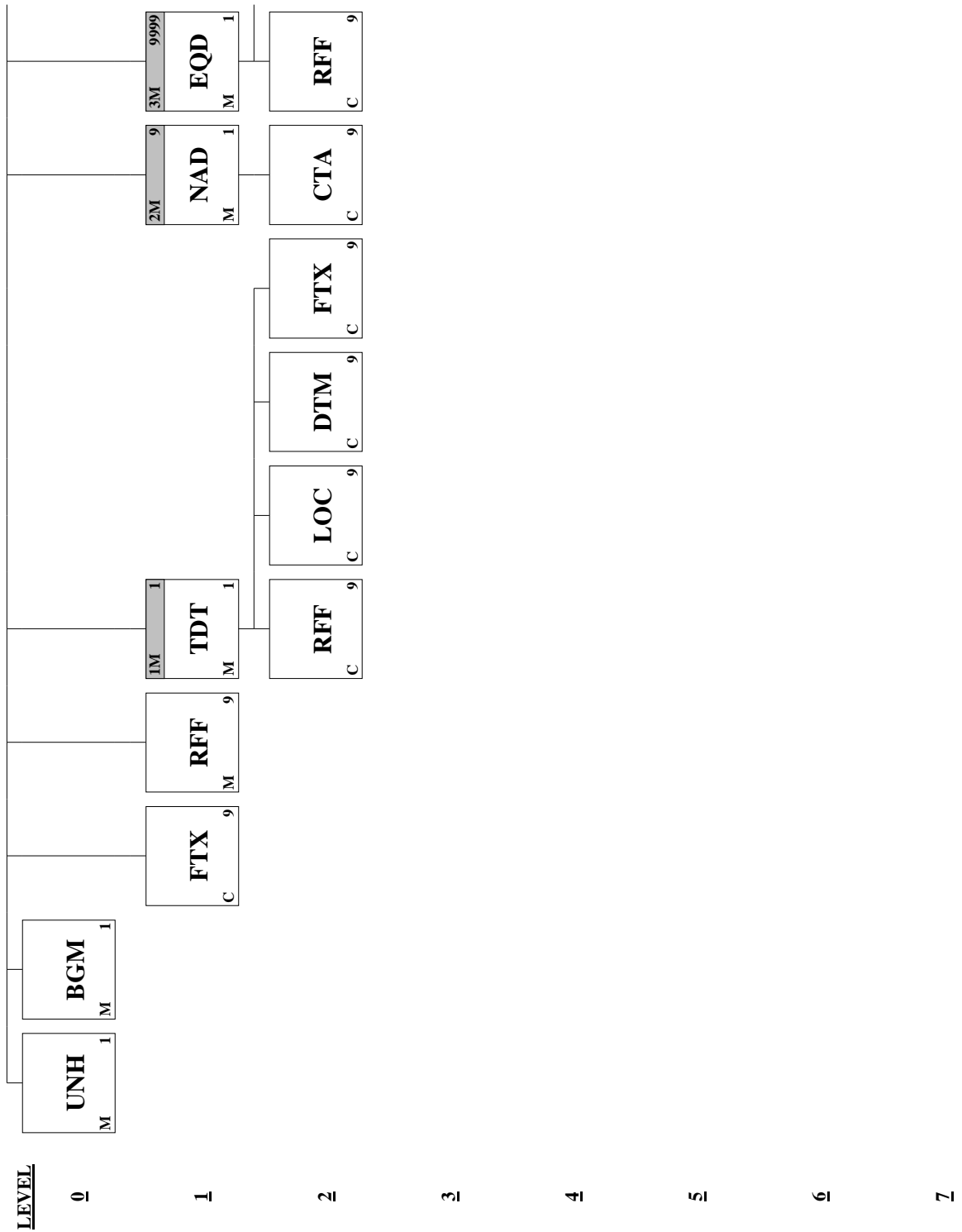
A message to order to the container terminal that the containers specified have to be discharged from a seagoing vessel or have to be loaded into a seagoing vessel.

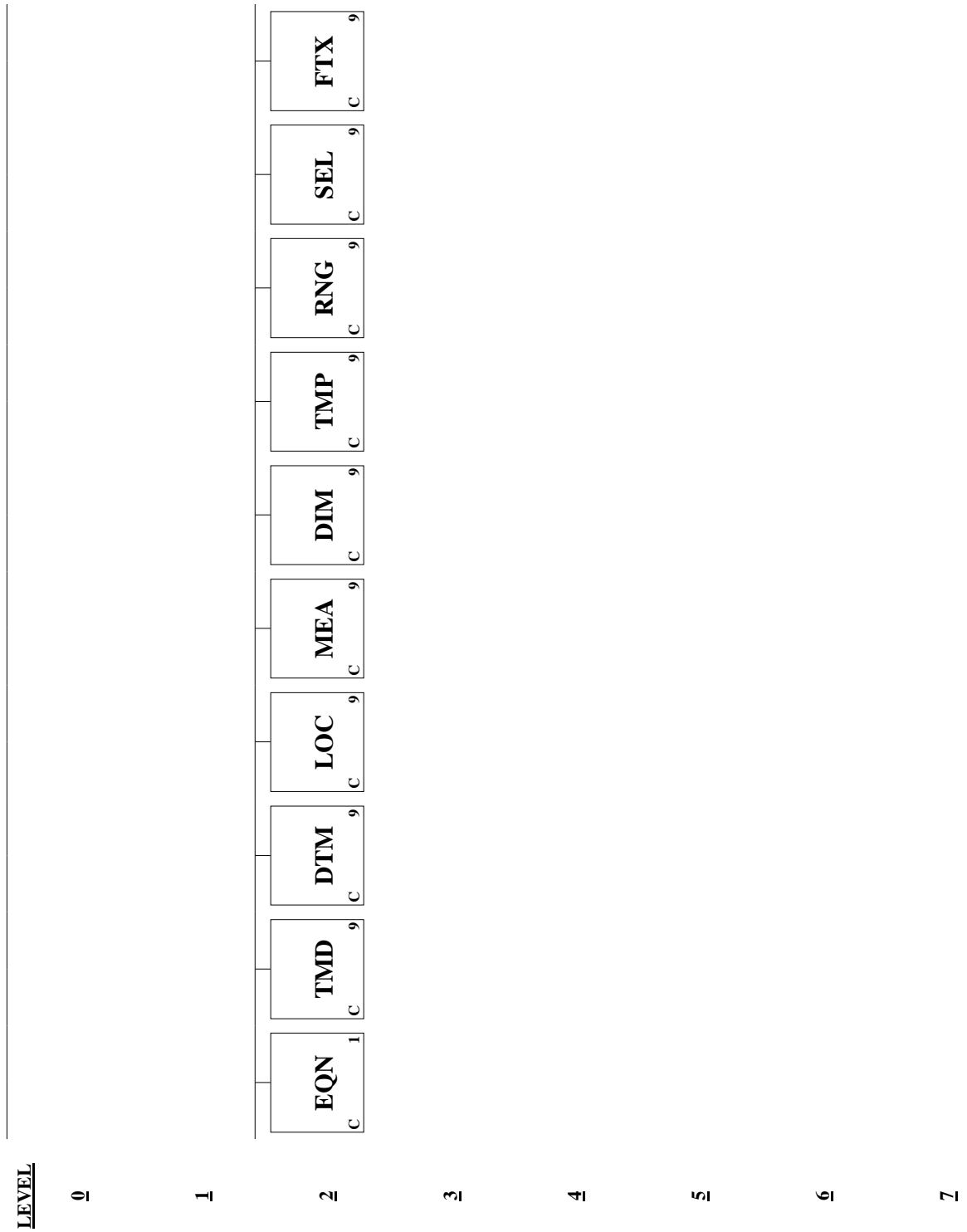
This message is part of a total set of container-related messages. These messages serve to facilitate the intermodal handling of containers by streamlining the information exchange. The business scenario for the container messages is clarified in a separate document, called: 'Guide to the scenario of EDIFACT container messages'.

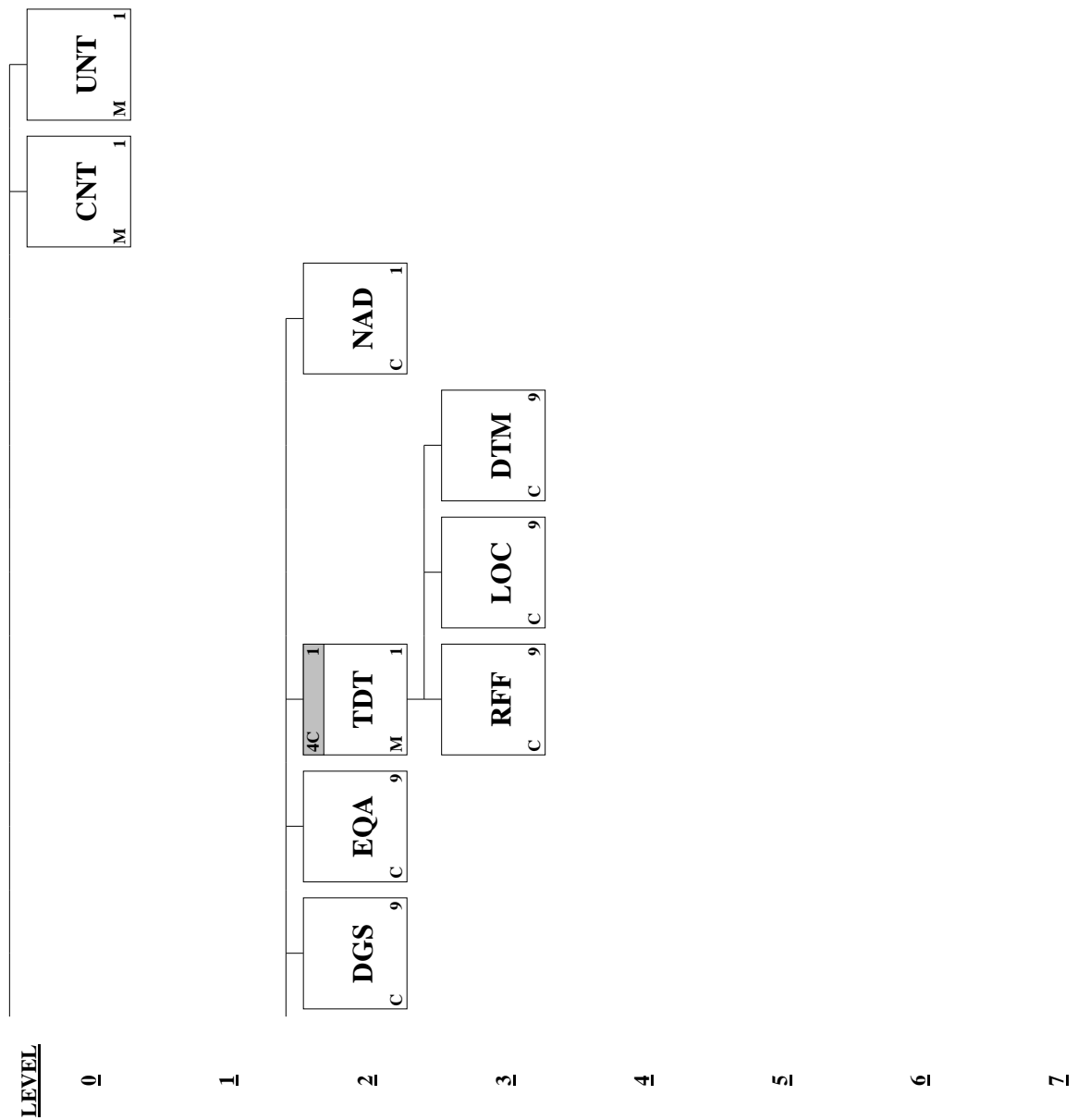
<u>MIG Usage</u>	<u>Pos. No.</u>	<u>Seg. ID</u>	<u>Name</u>	<u>Directory Usage</u>	<u>Max.Use</u>	<u>Group Repeat</u>
M	0010	UNH	Message Header	M	1	
M	0020	BGM	Beginning of Message	M	1	
O	0030	FTX	Free Text	C	9	
M	0040	RFF	Reference	M	9	
M	0050		Segment Group 1: TDT-RFF-LOC-DTM-FTX	M		1
M	0060	TDT	Details of Transport	M	1	
O	0070	RFF	Reference	C	9	
R	0080	LOC	Place/Location Identification	C	9	
O	0090	DTM	Date/Time/Period	C	9	
X	0100	FTX	Free Text	C	9	
M	0110		Segment Group 2: NAD-CTA	M		9
M	0120	NAD	Name and Address	M	1	
X	0130	CTA	Contact Information	C	9	
M	0140		Segment Group 3: EQD-RFF-EQN-TMD-DTM-LOC-MEA-DIM-TMP-RNG-SEL-FTX-DGS-EQA-SG4-NAD	M		9999
M	0150	EQD	Equipment Details	M	1	
O	0160	RFF	Reference	C	9	
D	0170	EQN	Number of Units	C	1	
O	0180	TMD	Transport Movement Details	C	9	
O	0190	DTM	Date/Time/Period	C	9	
R	0200	LOC	Place/Location Identification	C	9	
R	0210	MEA	Measurements	C	9	
D	0220	DIM	Dimensions	C	9	
D	0230	TMP	Temperature	C	9	
O	0240	RNG	Range Details	C	9	
O	0250	SEL	Seal Number	C	9	
O	0260	FTX	Free Text	C	9	
D	0270	DGS	Dangerous Goods	C	9	
O	0280	EQA	Attached Equipment	C	9	



			Segment Group 4: TDT-RFF-LOC-DTM	C	1
M	0300	TDT	Details of Transport	M	1
O	0310	RFF	Reference	C	9
O	0320	LOC	Place/Location Identification	C	9
O	0330	DTM	Date/Time/Period	C	9
D	0340	NAD	Name and Address	C	1
M	0350	CNT	Control Total	M	1
M	0360	UNT	Message Trailer	M	1







**Segment:** **UNH** Message Header

**Position:** 0010

**Group:**

**Level:** 0

**Usage:** Mandatory

**Max Use:** 1

**Purpose:** A service segment starting and uniquely identifying a message. The message type code for the Container discharge/loading order message is COPRAR.  
 Note: Container discharge/loading order messages conforming to this document must contain the following data in segment UNH, composite S009:  
 Data element 0065 COPRAR 0052 D 0054 95B 0051 UN

**Comments:**

**Notes:** *Sample segment :*  
**UNH+100011544142+COPRAR:D:95B:UN:SMDG16'**

#### Data Element Summary

	Data Element	Component Element	Name	Attributes
M	0062		MESSAGE REFERENCE NUMBER <i>Unique message reference assigned by the sender. This reference must also be transmitted in the UNT segment.</i>	M 1 an..14
M	S009		MESSAGE IDENTIFIER	M 1
M		0065	Message type identifier <i>COPRAR Container discharge/loading order message</i>	M an..6
M		0052	Message type version number <i>D Draft version/UN/EDIFACT Directory</i>	M an..3
M		0054	Message type release number <i>95B Release 19905 - B</i>	M an..3
M		0051	Controlling agency <i>UN UN/CEFACT</i>	M an..2
R		0057	Association assigned code <i>SMDG16 SMDG Version 1.6</i>	C an..6
O	0068		COMMON ACCESS REFERENCE <i>Additional message reference (if required)</i>	C 1 an..35
X	S010		STATUS OF THE TRANSFER	C 1
X		0070	Sequence message transfer number	M n..2
X		0073	First/last sequence message transfer indication	C a1

**Segment:** **BGM** Beginning of Message  
**Position:** 0020  
**Group:**  
**Level:** 0  
**Usage:** Mandatory  
**Max Use:** 1  
**Purpose:** A segment to indicate the beginning of a message and to transmit identifying number and further specification of the message type (in data element 1001: Document name code), such as Loading order, Discharge order.  
**Notes:** *Sample segment :*  
**BGM+45+100011544142+9'**

## Data Element Summary

	Data Element	Component Element	Name	Attributes
R	C002		DOCUMENT/MESSAGE NAME	C 1
R		1001	Document name code	C an..3
			43 <i>Transport discharge instruction</i>	
			45 <i>Transport loading instruction</i>	
X		1131	Code list identification code	C an..17
X		3055	Code list responsible agency code	C an..3
X		1000	Document name	C an..35
R	1004		DOCUMENT/MESSAGE NUMBER	C 1 an..35
			<i>Sender's unique reference number: Reference allocated by the sender individually, taken from the application.</i>	
			<i>Recommendation: In order to detect missing messages, a sequence number CAN be used which is incremented by the sender for each message type/receiver (format CCYNNNNNNNN, indicating 4 digits for the year, 7 digits for the sequence number).</i>	
R	1225		MESSAGE FUNCTION, CODED	C 1 an..3
			2 <i>Addition</i>	
			3 <i>Delete</i>	
			4 <i>Change</i>	
			5 <i>Replace</i>	
			9 <i>Original</i>	
			22 <i>Final</i>	
			33 <i>Change in header section</i>	
O	4343		RESPONSE TYPE CODE	C 1 an..3
			AB <i>Message acknowledgement</i>	

N.B. If in element 1225 the code values 2,3,4 or 5 are used the top level RFF (ACW) shall indicate the relation to a previous message.

**Segment:** **FTX** Free Text  
**Position:** 0030  
**Group:**  
**Level:** 1  
**Usage:** Conditional (Optional)  
**Max Use:** 9  
**Purpose:** A segment to specify free form or processable supplementary information, such as: - change information

#### Data Element Summary

User	Data	Component		
<u>Attribute</u>	<u>Element</u>	<u>Element</u>	<u>Name</u>	<u>Attributes</u>
M	4451		<b>TEXT SUBJECT QUALIFIER</b> Code specifying subject of a free text. <i>OSI Other service information</i>	M an..3
X	4453		<b>TEXT FUNCTION, CODED</b>	C an..3
O	C107		<b>TEXT REFERENCE</b> Coded reference to a standard text and its source.	C
M		4441	<b>Free text, coded</b> <i>D Discharge</i> <i>L Load</i>	M an..3
X		1131	Code list qualifier	C an..3
X		3055	Code list responsible agency, coded	C an..3
X	C108		<b>TEXT LITERAL</b> Free text; one to five lines.	C
X		4440	<b>Free text</b> Free text field available to the message sender for information.	M an..70
X		4440	<b>Free text</b>	C an..70
X		4440	<b>Free text</b>	C an..70
X		4440	<b>Free text</b>	C an..70
X	3453		<b>LANGUAGE, CODED</b> Code of language (ISO 639-1988).	C an..3

**Segment:** **RFF** Reference  
**Position:** 0040  
**Group:**  
**Level:** 1  
**Usage:** Mandatory  
**Max Use:** 9  
**Purpose:** A segment to express a reference which applies to the entire message, such as: -  
 container discharge/loading order reference - reference to previous message

#### Data Element Summary

User	Data	Component		
<u>Attribute</u>	<u>Element</u>	<u>Element</u>	<u>Name</u>	<u>Attributes</u>
M	C506		<b>REFERENCE</b> Identification of a reference.	<b>M</b>
M		<b>1153</b>	<b>Reference qualifier</b> <i>XXX dummy (RFF is mandatory)</i> <i>ACW Reference number to previous message (see note BGM)</i>	<b>M an..3</b>
R		<b>1154</b>	<b>Reference number</b> Identification number the nature and function of which can be qualified by an entry in data element 1153 Reference qualifier. <i>1 dummy value (in case of 'XXX' in 1153)</i> The document/message number (BGM 1004) of a previous message (in case of 'ACW' in 1153)	<b>C an..35</b>
X		<b>1156</b>	<b>Line number</b> Number of the line in the document/message referenced in 1154 Reference number.	<b>C an..6</b>
X		<b>4000</b>	<b>Reference version number</b> To uniquely identify a reference by its revision number.	<b>C an..35</b>



**Group:** **TDT** Segment Group 1: Details of Transport  
**Position:** 0050  
**Group:**  
**Level:** 1  
**Usage:** Mandatory  
**Max Use:** 1  
**Purpose:** A group of segments to indicate the main carriage means of transport.

#### Segment Summary

<u>User</u>	<u>Pos.</u>	<u>Seg.</u>		<u>Req.</u>	<u>Max.</u>	<u>Group:</u>
<u>Attribute</u>	<u>No.</u>	<u>ID</u>	<u>Name</u>	<u>Des.</u>	<u>Use</u>	<u>Repeat</u>
	0060	TDT	Details of Transport	M		1
	0070	RFF	Reference	C		9
	0080	LOC	Place/Location Identification	C		9
	0090	DTM	Date/Time/Period	C		9
	0100	FTX	Free Text	C		9

**Segment:** **TDT** Details of Transport  
**Position:** 0060 (Trigger Segment)  
**Group:** Segment Group 1 (Details of Transport) Mandatory  
**Level:** 1  
**Usage:** Mandatory  
**Max Use:** 1  
**Purpose:** A segment identifying the voyage of the vessel relevant to the message (main transport).

#### Data Element Summary

User	Data	Component		
<u>Attribute</u>	<u>Element</u>	<u>Element</u>	<u>Name</u>	<u>Attributes</u>
M	8051		<b>TRANSPORT STAGE QUALIFIER</b> Qualifier giving a specific meaning to the transport details. <i>20 Main-carriage transport</i>	M an..3
D	8028		<b>CONVEYANCE REFERENCE NUMBER</b> Unique reference given by the carrier to a certain journey or departure of a means of transport (generic term). <i>The vessel operator's voyage number (Main carriage)</i>	C an..17
R	C220		<b>MODE OF TRANSPORT</b> Method of transport code or name. Code preferred.	C
R		8067	<b>Mode of transport, coded</b> Coded method of transport used for the carriage of the goods. <i>1 Maritime transport (ocean)</i> <i>8 Inland Water</i>	C an..3
X		8066	<b>Mode of transport</b> Method of transport used for the carriage of the goods.	C an..17
X	C228		<b>TRANSPORT MEANS</b> Code and/or name identifying the type of means of transport.	C
X		8179	<b>Type of means of transport identification</b> Code defining the type of the means of transport being utilized.	C an..8
X		8178	<b>Type of means of transport</b> Description of the type of the means of transport being utilized.	C an..17
R	C040		<b>CARRIER</b> Identification of a carrier by code and/or by name. Code preferred.	C
R		3127	<b>Carrier identification</b> Identification of party undertaking or arranging transport of goods between named points. <i>Ship operator's name, coded</i>	C an..17
O		1131	<b>Code list qualifier</b> Identification of a code list. <i>172 Carrier code</i>	C an..3
O		3055	<b>Code list responsible agency, coded</b> Code identifying the agency responsible for a code list. <i>20 BIC (Bureau International des Containeurs)</i> <i>87 Assigned by carrier</i> <i>166 US, National Motor Freight Classification</i>	C an..3

		<i>Association/SCAC</i>	
X	3128	<b>Carrier name</b>	C an..35
		Name of party undertaking or arranging transport of goods between named points.	
X	8101	<b>TRANSIT DIRECTION, CODED</b>	C an..3
		Identification of the point of origin and point of direction.	
X	C401	<b>EXCESS TRANSPORTATION INFORMATION</b>	C
X	8457	<b>Excess transportation reason, coded</b>	M an..3
X	8459	<b>Excess transportation responsibility, coded</b>	M an..3
X	7130	<b>Customer authorization number</b>	C an..17
R	C222	<b>TRANSPORT IDENTIFICATION</b>	C
		Code and/or name identifying the means of transport.	
R	8213	<b>Id. of means of transport identification</b>	C an..9
		Identification of the means of transport by name or number.	
		<b>Vessel code</b>	
		1. international radio call sign (recommended)	
		2. Lloyd's number	
R	1131	<b>Code list qualifier</b>	C an..3
		Identification of a code list.	
		103	<i>Radio Call sign directory</i>
		146	<i>Lloyd's register of ships</i>
X	3055	<b>Code list responsible agency, coded</b>	C an..3
		Code identifying the agency responsible for a code list.	
O	8212	<b>Id. of the means of transport</b>	C an..35
		Identification of the means of transport by name or number.	
		<b>Name of the vessel</b>	
X	8453	<b>Nationality of means of transport, coded</b>	C an..3
		Coded name of the country in which a means of transport is registered.	
X	8281	<b>TRANSPORT OWNERSHIP, CODED</b>	C an..3

**Segment:** **RFF** Reference  
**Position:** 0070  
**Group:** Segment Group 1 (Details of Transport) Mandatory  
**Level:** 2  
**Usage:** Conditional (Optional)  
**Max Use:** 9  
**Purpose:** A segment identifying a relevant reference number, such as: - shipping -  
 syndicate - marketing organization - conference code  
**This segment is to be used in case the sender's voyage number is not the same  
 as the vessel operator's voyage number (sent in TDT)**

#### Data Element Summary

<u>User</u>	<u>Data</u>	<u>Component</u>	<u>Name</u>	<u>Attributes</u>
<u>Attribute</u>	<u>Element</u>	<u>Element</u>		
M	C506		<b>REFERENCE</b> Identification of a reference.	M
M		1153	<b>Reference qualifier</b> Code giving specific meaning to a reference segment or a reference number. <i>VON Voyage Number</i>	M an..3
O		1154	<b>Reference number</b> <b><i>Alternative voyage number</i></b>	C an..35
X		1156	<b>Line number</b> Number of the line in the document/message referenced in 1154 Reference number.	C an..6
X		4000	<b>Reference version number</b> To uniquely identify a reference by its revision number.	C an..35

**Segment:** **LOC** Place/Location Identification  
**Position:** 0080  
**Group:** Segment Group 1 (Details of Transport) Mandatory  
**Level:** 2  
**Usage:** Conditional (**REQUIRED**)  
**Max Use:** 9  
**Purpose:** A segment to identify a location related to the means of transport, such as: -  
 place of departure/arrival (terminal within the port)

#### Data Element Summary

User	Data	Component		
<u>Attribute</u>	<u>Element</u>	<u>Element</u>	<u>Name</u>	<u>Attributes</u>
M	3227		<b>PLACE/LOCATION QUALIFIER</b> Code identifying the function of a location. 9 <i>Operational Port of Loading (COPRAR Load - BGM+45)</i> 11 <i>Operational Port of Discharge (COPRAR Dis - BGM+43)</i>	M an..3
R	C517		<b>LOCATION IDENTIFICATION</b> Identification of a location by code or name.	C
R		3225	<b>Place/location identification</b> Identification of the name of place/location, other than 3164 City name. <i>UN-Locode of ship's departure</i>	C an..25
O		1131	<b>Code list qualifier</b> Identification of a code list. 139 <i>Port</i>	C an..3
O		3055	<b>Code list responsible agency, coded</b> Code identifying the agency responsible for a code list. 6 <i>UN</i>	C an..3
X		3224	<b>Place/location</b> Name of place/location, other than 3164 City name.	C an..17
O	C519		<b>RELATED LOCATION ONE IDENTIFICATION</b> Identification the first related location by code or name.	C
R		3223	<b>Related place/location one identification</b> Specification of the first related place/location by code. <i>Terminal/berth</i>	C an..25
R		1131	<b>Code list qualifier</b> Identification of a code list. <i>BER Berth</i> <i>TER Terminal</i>	C an..3
R		3055	<b>Code list responsible agency, coded</b> Code identifying the agency responsible for a code list. <i>ZZZ Mutually agreed</i>	C an..3
X		3222	<b>Related place/location one</b> Specification of the first related place/location by name.	C an..70
X	C553		<b>RELATED LOCATION TWO IDENTIFICATION</b> Identification of second related location by code or name.	C
X		3233	<b>Related place/location two identification</b>	C an..25

---

X			Specification of a second related place/location by code.		
X	1131	<b>Code list qualifier</b>	Identification of a code list.	C	an..3
X	3055	<b>Code list responsible agency, coded</b>	Code identifying the agency responsible for a code list.	C	an..3
X	3232	<b>Related place/location two</b>	Specification of a second related place/location by name.	C	an..70
X	5479	<b>RELATION, CODED</b>	To specify the relationship between two or more items.	C	an..3

**Segment:** **DTM** Date/Time/Period  
**Position:** 0090  
**Group:** Segment Group 1 (Details of Transport) Mandatory  
**Level:** 2  
**Usage:** Conditional (Optional)  
**Max Use:** 9  
**Purpose:** A segment identifying a date/time related to the arrival or departure of the vessel, such as: - estimated date/time of arrival/departure

#### Data Element Summary

<u>User</u>	<u>Data</u>	<u>Component</u>	<u>Name</u>	<u>Attributes</u>
<u>Attribute</u>	<u>Element</u>	<u>Element</u>		
M	C507		<b>DATE/TIME/PERIOD</b> Date and/or time, or period relevant to the specified date/time/period type.	<b>M</b>
M		<b>2005</b>	<b>Date/time/period qualifier</b> Code giving specific meaning to a date, time or period. 132 <i>Arrival date/time, estimated</i> 133 <i>Departure date/time, estimated</i>	<b>M an..3</b>
R		<b>2380</b>	<b>Date/time/period</b> The value of a date, a date and time, a time or of a period in a specified representation. <i>(Estimated) Date/time of arrival</i> <i>(Estimated) Date/time of departure</i>	<b>C an..35</b>
R		<b>2379</b>	<b>Date/time/period format qualifier</b> Specification of the representation of a date, a date and time or of a period. 203 <i>CCYYMMDDHHMM</i>	<b>C an..3</b>

**Segment:** **FTX** Free Text  
**Position:** 0100  
**Group:** Segment Group 1 (Details of Transport) Mandatory  
**Level:** 2  
**Usage:** Conditional (NOT TO BE USED)  
**Max Use:** 9  
**Purpose:** A segment giving supplementary information related to the vessel, such as: -  
 transport details remarks

*This segment is not to be used.*

#### Data Element Summary

<u>User</u>	<u>Data</u>	<u>Component</u>	<u>Name</u>	<u>Attributes</u>
<u>Attribute</u>	<u>Element</u>	<u>Element</u>		
X	4451		<b>TEXT SUBJECT QUALIFIER</b> Code specifying subject of a free text.	M an..3
X	4453		<b>TEXT FUNCTION, CODED</b> Code specifying how to handle the text.	C an..3
X	C107		<b>TEXT REFERENCE</b> Coded reference to a standard text and its source.	C
X		4441	<b>Free text, coded</b> Free text in coded form.	M an..3
X		1131	<b>Code list qualifier</b> Identification of a code list.	C an..3
X		3055	<b>Code list responsible agency, coded</b> Code identifying the agency responsible for a code list.	C an..3
X	C108		<b>TEXT LITERAL</b> Free text; one to five lines.	C
X		4440	<b>Free text</b> Free text field available to the message sender for information.	M an..70
X		4440	<b>Free text</b>	C an..70
X		4440	<b>Free text</b>	C an..70
X		4440	<b>Free text</b>	C an..70
X	3453		<b>LANGUAGE, CODED</b> Code of language (ISO 639-1988).	C an..3



**Group:** **NAD** Segment Group 2: Name and Address  
**Position:** 0110  
**Group:**  
**Level:** 1  
**Usage:** Mandatory  
**Max Use:** 9  
**Purpose:** A group of segments to identify a party and related contacts.

#### Segment Summary

<u>User</u>	<u>Pos.</u>	<u>Seg.</u>		<u>Req.</u>	<u>Max.</u>	<u>Group:</u>
<u>Attribute</u>	<u>No.</u>	<u>ID</u>	<u>Name</u>	<u>Des.</u>	<u>Use</u>	<u>Repeat</u>
	0120	NAD	Name and Address	M		1
	0130	CTA	Contact Information	C		9

**Segment:** **NAD** Name and Address  
**Position:** 0120 (Trigger Segment)  
**Group:** Segment Group 2 (Name and Address) Mandatory  
**Level:** 1  
**Usage:** Mandatory  
**Max Use:** 1  
**Purpose:** A segment to identify the party's name, address, and function, and other addresses, such as: - message recipient - message sender - ordering customer - ordering customer agent

#### Data Element Summary

User	Data	Component		
<u>Attribute</u>	<u>Element</u>	<u>Element</u>	<u>Name</u>	<u>Attributes</u>
M	3035		<b>PARTY QUALIFIER</b> Code giving specific meaning to a party. <i>CA Carrier</i> <i>CF Container operator/lessee</i> <b><i>This code applies to every container mentioned in grp3 unless in segment NAD (grp3) specified otherwise.</i></b> <i>[SLS] Shipping line service</i>	M an..3
R	C082		<b>PARTY IDENTIFICATION DETAILS</b> Identification of a transaction party by code.	C
M		3039	<b>Party id. identification</b> Code identifying a party involved in a transaction. <b><i>Carrier, coded</i></b>	M an..35
R		1131	<b>Code list qualifier</b> Identification of a code list. <i>160 Party Id.</i>	C an..3
R		3055	<b>Code list responsible agency, coded</b> Code identifying the agency responsible for a code list. <i>20 BIC (Bureau International des Containeurs)</i> <i>166 US, National Motor Freight Classification Association/SCAC</i> <i>ZZZ Mutually agreed</i>	C an..3
X	C058		<b>NAME AND ADDRESS</b> Unstructured name and address: one to five lines.	C
X		3124	<b>Name and address line</b> Free form name and address description.	M an..35
X		3124	<b>Name and address line</b> Free form name and address description.	C an..35
X		3124	<b>Name and address line</b> Free form name and address description.	C an..35
X		3124	<b>Name and address line</b> Free form name and address description.	C an..35
X		3124	<b>Name and address line</b> Free form name and address description.	C an..35
X	C080		<b>PARTY NAME</b>	C

			Identification of a transaction party by name, one to five lines. Party name may be formatted.	
X		3036	<b>Party name</b> Name of a party involved in a transaction.	M an..35
X		3036	<b>Party name</b> Name of a party involved in a transaction.	C an..35
X		3036	<b>Party name</b> Name of a party involved in a transaction.	C an..35
X		3036	<b>Party name</b> Name of a party involved in a transaction.	C an..35
X		3036	<b>Party name</b> Name of a party involved in a transaction.	C an..35
X		3045	<b>Party name format, coded</b> Specification of the representation of a party name.	C an..3
X	C059		<b>STREET</b> Street address and/or PO Box number in a structured address: one to three lines.	C
X		3042	<b>Street and number/p.o. box</b> Street and number in plain language, or Post Office Box No.	M an..35
X		3042	<b>Street and number/p.o. box</b> Street and number in plain language, or Post Office Box No.	C an..35
X		3042	<b>Street and number/p.o. box</b> Street and number in plain language, or Post Office Box No.	C an..35
X	3164		<b>CITY NAME</b> Name of a city (a town, a village) for addressing purposes.	C an..35
X	3229		<b>COUNTRY SUB-ENTITY IDENTIFICATION</b> Identification of the name of sub-entities (state, province) defined by appropriate governmental agencies.	C an..9
X	3251		<b>POSTCODE IDENTIFICATION</b> Code defining postal zones or addresses.	C an..9
X	3207		<b>COUNTRY, CODED</b> Identification of the name of a country or other geographical entity as specified in ISO 3166.	C an..3

**Segment:** **CTA** **Contact Information**  
**Position:** 0130  
**Group:** Segment Group 2 (Name and Address)      Mandatory  
**Level:** 2  
**Usage:** Conditional (NOT TO BE USED)  
**Max Use:** 9  
**Purpose:** A segment to identify a person or department of a message sender and/or message recipient, such as: - information contact

**This segment is not to be used.**

#### Data Element Summary

<u>User</u>	<u>Data</u>	<u>Component</u>	<u>Attributes</u>
<u>Attribute</u>	<u>Element</u>	<u>Element</u> <u>Name</u>	
X	3139	<b>CONTACT FUNCTION, CODED</b> Code specifying the function of a contact (e.g. department or person).	C an..3
X	C056	<b>DEPARTMENT OR EMPLOYEE DETAILS</b> Code and/or name of a department or employee. Code preferred.	C
X		<b>3413 Department or employee identification</b> Internal identification code.	C an..17
X		<b>3412 Department or employee</b> The department or person within an organizational entity.	C an..35

**Group:** **EQD** Segment Group 3: Equipment Details  
**Position:** 0140  
**Group:**  
**Level:** 1  
**Usage:** Mandatory  
**Max Use:** 9999  
**Purpose:** A group of segments to specify containers or groups of containers (in case of guidelines) that are either to be loaded or to be discharged.

#### Segment Summary

<u>User</u>	<u>Pos.</u>	<u>Seg.</u>		<u>Req.</u>	<u>Max.</u>	<u>Group:</u>
<u>Attribute</u>	<u>No.</u>	<u>ID</u>	<u>Name</u>	<u>Des.</u>	<u>Use</u>	<u>Repeat</u>
	0150	EQD	Equipment Details	M		1
	0160	RFF	Reference	C		9
	0170	EQN	Number of Units	C		1
	0180	TMD	Transport Movement Details	C		9
	0190	DTM	Date/Time/Period	C		9
	0200	LOC	Place/Location Identification	C		9
	0210	MEA	Measurements	C		9
	0220	DIM	Dimensions	C		9
	0230	TMP	Temperature	C		9
	0240	RNG	Range Details	C		9
	0250	SEL	Seal Number	C		9
	0260	FTX	Free Text	C		9
	0270	DGS	Dangerous Goods	C		9
	0280	EQA	Attached Equipment	C		9
	0290		Segment Group 4: Details of Transport	C		1
	0340	NAD	Name and Address	C		1

Referring to the use of data elements 8053, 8260, 8155, 8154 (EQD), of RFF segment, of EQN segment, of FTX segment and of EQA segment three cases have to be taken into consideration:

### **1. Ordering one container or swapbody where prefix and serial number are known:**

EQD 8053: qualifier 'CN' or 'SW'  
EQD 8260: prefix and serial number  
EQD 8155: ISO code  
EQD 3055: '5' (ISO)  
EQD 8154: Non-ISO code (no value in 3055)  
FTX segment: commodity description (conditional)

Loading only:

EQN segment: not to be used  
EQA segment: only to be used for special equipment (reefer generator, trailer)

### **2. Ordering one or more (empty) containers where prefix and serial number are not known:**

EQD 8053: qualifier 'CN'  
EQD 8260: sequence number  
either EQD 8155 (if ISO code is known) or EQD 8154 to be given  
EQN segment: quantity to be given (even if quantity is '1')  
FTX segment: not to be used  
EQA segment: not to be used

### **3. Ordering un-containerised cargo:**

EQD 8053: qualifier 'BB'  
EQD 8260: not to be used  
EQD 8155: not to be used  
EQD 8154: not to be used  
FTX segment: uncontainerised cargo description (mandatory)

Loading only:

EQN segment: not to be used  
EQA segment: to be used for supporting equipment (e.g. flatracks, platforms) with qualifier 'CN'

**Segment:** **EQD** Equipment Details  
**Position:** 0150 (Trigger Segment)  
**Group:** Segment Group 3 (Equipment Details) Mandatory  
**Level:** 1  
**Usage:** Mandatory  
**Max Use:** 1  
**Purpose:** A segment identifying a container, container size/type. The equipment status may be e.g. import, export, transshipment, shifter.

#### Data Element Summary

User	Data	Component		
<u>Attribute</u>	<u>Element</u>	<u>Element</u>	<u>Name</u>	<u>Attributes</u>
M	8053		<b>EQUIPMENT QUALIFIER</b> Code identifying type of equipment. <i>BB Break bulk</i> <i>CN Container</i> <i>SW Swap body</i>	M an..3
D	C237		<b>EQUIPMENT IDENTIFICATION</b> Marks (letters and/or numbers) identifying equipment used for transport such as a container.	C
D		8260	<b>Equipment identification number</b> Marks (letters and/or numbers) which identify equipment e.g. unit load device. <b>1. Container: container number (contiguous string)</b> <b>2. Breakbulk: Leave blank</b> <b>3. Empty containers without identifying the numbers: Sequence number (COPRAR LOAD – BGM+45 only)</b> <b>4. Otherwise (Ro/Ro, swapbody): the equipment ID number</b>	C an..17
D		1131	<b>Code list qualifier</b> Identification of a code list. <i>ZZZ mutually agreed; to be used only if empty containers with guidelines are ordered</i>	C an..3
X		3055	<b>Code list responsible agency, coded</b> Code identifying the agency responsible for a code list.	C an..3
X		3207	<b>Country, coded</b> Identification of the name of a country or other geographical entity as specified in ISO 3166.	C an..3
D	C224		<b>EQUIPMENT SIZE AND TYPE</b>	C
D		8155	<b>Equipment size and type identification</b> Coded description of the size and type of equipment e.g. unit load device. <b>ISO size type code according to ISO 6346.</b>	C an..10
D		1131	<b>Code list qualifier</b> Identification of a code list. <i>102 Size and type</i>	C an..3
D		3055	<b>Code list responsible agency, coded</b> Code identifying the agency responsible for a code list.	C an..3

		5	<i>ISO (International Organization for Standardization)</i>	
<b>D</b>	<b>8154</b>	<b>Equipment size and type</b>		<b>C an..35</b>
		Plain language description of the size and type of equipment e.g. unit load device.		
		<i>Equipment size/type (free text)</i>		
<b>O</b>	<b>8077</b>	<b>EQUIPMENT SUPPLIER, CODED</b>		<b>C an..3</b>
		To indicate the party that is the supplier of the equipment.		
		1	<i>Shipper supplied</i>	
		2	<i>Carrier supplied</i>	
		3	<i>Third party supplied</i>	
<b>O</b>	<b>8249</b>	<b>EQUIPMENT STATUS, CODED</b>		<b>C an..3</b>
		Indication of the action related to the equipment.		
		1	<i>Continental</i>	
		2	<i>Export</i>	
		3	<i>Import</i>	
		6	<i>Transshipment</i>	
<b>R</b>	<b>8169</b>	<b>FULL/EMPTY INDICATOR, CODED</b>		<b>C an..3</b>
		To indicate the extent to which the equipment is full or empty.		
		4	<i>Empty</i>	
		5	<i>Full, also used for break bulk</i>	

N.B. C237 and C224 are required except in the case of break bulk.



**Segment:** **RFF** Reference  
**Position:** 0160  
**Group:** Segment Group 3 (Equipment Details) Mandatory  
**Level:** 2  
**Usage:** Conditional (Optional)  
**Max Use:** 9  
**Purpose:** A segment identifying a relevant reference number, such as: - container sequence number - upper equipment serial number of range - lower equipment serial number of range

#### Data Element Summary

User	Data	Component		
Attribute	Element	Element	Name	Attributes
M	C506		<b>REFERENCE</b> Identification of a reference.	M
M		1153	<b>Reference qualifier</b> Code giving specific meaning to a reference segment or a reference number. <i>AAY Carrier's agent reference number</i> <i>ABT Customs declaration number</i> <i>BN Booking reference number</i> <i>CV Container operators reference number</i> <b>To be used for DG reference number according to DG reference number in stowage instructions</b> <i>EQ Alternate equipment number</i> <b>To be used in the event that an alternative equipment number is to be quoted in addition to the number in the EQD</b> <i>VGR Transport equipment gross mass verification reference number</i> <b>Code as available from version D.15B:</b> <b>Identification reference to documentation of transport equipment gross mass (weight) verification</b>	M an..3
R		1154	<b>Reference number</b> Identification number the nature and function of which can be qualified by an entry in data element 1153 Reference qualifier.	C an..35
X		1156	<b>Line number</b> Number of the line in the document/message referenced in 1154 Reference number.	C an..6
X		4000	<b>Reference version number</b> To uniquely identify a reference by its revision number.	C an..35

**Segment:** **EQN** Number of Units  
**Position:** 0170  
**Group:** Segment Group 3 (Equipment Details) Mandatory  
**Level:** 2  
**Usage:** **DEPENDENT** (Optional)  
**Max Use:** 1  
**Purpose:** A segment to specify the number of containers in one guideline that meets the same equipment details information.

#### Data Element Summary

User	Data	Component		
<u>Attribute</u>	<u>Element</u>	<u>Element</u>	<u>Name</u>	<u>Attributes</u>
M	C523		<b>NUMBER OF UNIT DETAILS</b> Identification of number of units and its purpose. <i>To be used only for ordering empty containers without indicating prefix and container number.</i>	M
R		6350	<b>Number of units</b> Number of units of a certain type. <i>The quantity of empty containers described in EQD segment which shall be loaded, even if quantity is '1'</i>	C n..15
X		6353	<b>Number of units qualifier</b> Indication of the objective of number of units information.	C an..3

**Segment:** **TMD** **Transport Movement Details**  
**Position:** 0180  
**Group:** Segment Group 3 (Equipment Details)      Mandatory  
**Level:** 2  
**Usage:** Conditional (Optional)  
**Max Use:** 9  
**Purpose:** A segment to indicate a Full Container Load (FCL) or a Less than Full Container Load (LCL).

#### Data Element Summary

<u>User</u>	<u>Data</u>	<u>Component</u>	<u>Name</u>	<u>Attributes</u>
<u>Attribute</u>	<u>Element</u>	<u>Element</u>		
R	C219		<b>MOVEMENT TYPE</b> Description of type of service for movement of cargo.	C
R		8335	<b>Movement type, coded</b> Code indicating the type of movement. 2            LCL/LCL            = Pier/Pier = CFS/CFS 3            FCL/FCL            = House/House = CY/CY 4            FCL/LCL            = House/Pier = CY/CFS 5            LCL/FCL            = Pier/House = CFS/CY	C an..3
X		8334	<b>Movement type</b> Description of the type of movement.	C an..35
X	8332		<b>EQUIPMENT PLAN</b> Description indicating equipment plan, e.g. FCL or LCL.	C an..26
X	8341		<b>HAULAGE ARRANGEMENTS, CODED</b> Specification of the type of equipment haulage arrangements.	C an..3

**Segment:** **DTM** Date/Time/Period  
**Position:** 0190  
**Group:** Segment Group 3 (Equipment Details) Mandatory  
**Level:** 2  
**Usage:** Conditional (Optional)  
**Max Use:** 9  
**Purpose:** A segment to identify a date/time related to the equipment, such as: - actual arrival/departure date/time - CSC expiration date (International Convention for Safe Containers)

#### Data Element Summary

User	Data	Component		
<u>Attribute</u>	<u>Element</u>	<u>Element</u>	<u>Name</u>	<u>Attributes</u>
M	C507		<b>DATE/TIME/PERIOD</b> Date and/or time, or period relevant to the specified date/time/period type.	<b>M</b>
M		<b>2005</b>	<b>Date/time/period qualifier</b> Code giving specific meaning to a date, time or period. 798 <i>Verified gross mass determination date/time</i> <b>Code as available from version D.15B:</b> <b><i>Date/Time when a gross mass (weight) of a packed container was obtained for verification according to SOLAS chapter VI, regulation 2, paragraphs 4-6</i></b>	<b>M an..3</b>
O		<b>2380</b>	<b>Date/time/period</b> The value of a date, a date and time, a time or of a period in a specified representation.	<b>C an..35</b>
O		<b>2379</b>	<b>Date/time/period format qualifier</b> Specification of the representation of a date, a date and time or of a period. 203 <i>CCYYMMDDHHMM</i>	<b>C an..3</b>

**Segment:** **LOC** **Place/Location Identification**  
**Position:** 0200  
**Group:** Segment Group 3 (Equipment Details) Mandatory  
**Level:** 2  
**Usage:** **REQUIRED**  
**Max Use:** 9  
**Purpose:** A segment to identify a location or country related to the equipment, such as: -  
 stowage cell - (final) place/port of discharge - transshipment place - place of  
 delivery - country of origin/destination

## Data Element Summary

User	Data	Component		
<u>Attribute</u>	<u>Element</u>	<u>Element</u>	<u>Name</u>	<u>Attributes</u>
M	3227		<b>PLACE/LOCATION QUALIFIER</b> Code identifying the function of a location. 9 Operational Port of Loading (COPRAR Discharge – 43) 11 Operational Port of Discharge (COPRAR Load – 45) 7 Place of Delivery (final destination) PDS Place of destination (destination for stowage purposes)	M an..3
R	C517		<b>LOCATION IDENTIFICATION</b> Identification of a location by code or name.	C
R		3225	<b>Place/location identification</b> Identification of the name of place/location, other than 3164 City name. <i>UN-Locode of ship's departure</i>	C an..25
O		1131	<b>Code list qualifier</b> Identification of a code list. 139 Port	C an..3
O		3055	<b>Code list responsible agency, coded</b> Code identifying the agency responsible for a code list. 6 UN 9 EAN 12 UIC 112 US Census	C an..3
O		3224	<b>Place/location</b> Name of place/location, other than 3164 City name.	C an..17
R	C519		<b>RELATED LOCATION ONE IDENTIFICATION</b> Identification the first related location by code or name.	C
R		3223	<b>Related place/location one identification</b> Specification of the first related place/location by code. <i>Terminal/berth</i>	C an..25
R		1131	<b>Code list qualifier</b> Identification of a code list. BER Berth TER Terminal	C an..3
R		3055	<b>Code list responsible agency, coded</b> Code identifying the agency responsible for a code list.	C an..3

---

		<i>ZZZ</i>	<i>Mutually agreed</i>		
X		3222	<b>Related place/location one</b> Specification of the first related place/location by name.	C	an..70
X	C553		<b>RELATED LOCATION TWO IDENTIFICATION</b> Identification of second related location by code or name.	C	
X		3233	<b>Related place/location two identification</b> Specification of a second related place/location by code.	C	an..25
X		1131	<b>Code list qualifier</b> Identification of a code list.	C	an..3
X		3055	<b>Code list responsible agency, coded</b> Code identifying the agency responsible for a code list.	C	an..3
X		3232	<b>Related place/location two</b> Specification of a second related place/location by name.	C	an..70
X	5479		<b>RELATION, CODED</b> To specify the relationship between two or more items.	C	an..3

**Segment:** **MEA** Measurements  
**Position:** 0210  
**Group:** Segment Group 3 (Equipment Details) Mandatory  
**Level:** 2  
**Usage:** REQUIRED  
**Max Use:** 9  
**Purpose:** A segment specifying a physical measurement related to the equipment, such as: - gross weight

#### Data Element Summary

User	Data	Component		
<u>Attribute</u>	<u>Element</u>	<u>Element</u>	<u>Name</u>	<u>Attributes</u>
M	6311		<b>MEASUREMENT APPLICATION QUALIFIER</b> Specification of the application of the physical measurement used. <i>AAE Measurement</i>	M an..3
R	C502		<b>MEASUREMENT DETAILS</b> Identification of measurement type.	C
R		6313	<b>Measurement dimension, coded</b> Specification of the type of dimension to be measured. <i>G Gross weight</i> <i>VGM Transport equipment verified gross mass (weight)</i> <b>Code as available from version D.15B:</b> <b>Transport equipment's gross mass (weight) verified according to SOLAS Chapter VI, Regulation 2, paragraphs 4-6</b>	C an..3
X		6321	<b>Measurement significance, coded</b> Code specifying the significance of a measurement value.	C an..3
X		6155	<b>Measurement attribute, coded</b> Code used to specify non-discrete measurement values.	C an..3
X		6154	<b>Measurement attribute</b> To specify non-discrete measurement values.	C an..70
O	C174		<b>VALUE/RANGE</b> Measurement value and relevant minimum and maximum tolerances in that order.	C
M		6411	<b>Measure unit qualifier</b> Indication of the unit of measurement in which weight (mass), capacity, length, area, volume or other quantity is expressed. <i>KGM Kilograms</i>	M an..3
O		6314	<b>Measurement value</b> Value of the measured unit. <b>Gross weight in kg (tare weight for empty containers). Gross weight is the sum of cargo weight and container (equipment) weight</b>	C n..18
X		6162	<b>Range minimum</b> Minimum of a range.	C n..18
X		6152	<b>Range maximum</b> Maximum of a range.	C n..18
X		6432	<b>Significant digits</b> To specify the number of significant digits.	C n..2

<b>X</b>	<b>7383</b>	<b>SURFACE/LAYER INDICATOR, CODED</b>	<b>C an..3</b>
----------	-------------	---------------------------------------	----------------

Code indicating the surface or layer of a product that is being described.



**Segment:** **DIM** Dimensions  
**Position:** 0220  
**Group:** Segment Group 3 (Equipment Details) Mandatory  
**Level:** 2  
**Usage:** Conditional (Optional)  
**Max Use:** 9  
**Purpose:** A segment specifying physical dimensions related to the equipment to be used for out-of-gage containers and for break bulk, such as: - gross dimensions  
 - off standard dimension general - off standard dimension left - off standard dimension right - off standard dimension back - off standard dimension front

#### Data Element Summary

<u>User</u>	<u>Data</u>	<u>Component</u>	<u>Name</u>	<u>Attributes</u>
<u>Attribute</u>	<u>Element</u>	<u>Element</u>		
M	6145		<b>DIMENSION QUALIFIER</b> To specify the dimensions applicable to each of the transportable units.	M an..3
			1 <i>Gross dimensions</i> <b>To be used for break bulk only</b>	
			5 <i>Off-standard dimension front</i>	
			6 <i>Off-standard dimension back</i>	
			7 <i>Off-standard dimension right</i>	
			8 <i>Off-standard dimension left</i>	
			9 <i>Off-standard dimension general (overheight)</i>	
			10 <i>External equipment dimension</i> <b>To be used for non-ISO equipment only</b>	
M	C211		<b>DIMENSIONS</b> Specification of the dimensions of a transportable unit.	M
M		6411	<b>Measure unit qualifier</b> Indication of the unit of measurement in which weight (mass), capacity, length, area, volume or other quantity is expressed.	M an..3
			<i>CMT</i> <i>centimeter</i>	
D		6168	<b>Length dimension</b> Total length for break bulk Overlength for containers.	C n..15
D		6140	<b>Width dimension</b> Total width for break bulk Overwidth for containers.	C n..15
D		6008	<b>Height dimension</b> Total height for break bulk Overheight for containers.	C n..15

**Segment:** **TMP** Temperature  
**Position:** 0230  
**Group:** Segment Group 3 (Equipment Details) Mandatory  
**Level:** 2  
**Usage:** **DEPENDENT** (Optional)  
**Max Use:** 9  
**Purpose:** A segment which identifies the transport temperature setting of the container.  
 To be used for container/cargo which has to be cooled or heated

#### Data Element Summary

User	Data	Component		
<u>Attribute</u>	<u>Element</u>	<u>Element</u>	<u>Name</u>	<u>Attributes</u>
M	6245		<b>TEMPERATURE QUALIFIER</b> A code giving specific meaning to the temperature. 2 Transport temperature	M an..3
R	C239		<b>TEMPERATURE SETTING</b> Temperature according to which the cargo has to be transported.	C
R		6246	<b>Temperature setting</b> The actual temperature value in degrees Celsius (e.g. 008, 020).	C n3
R		6411	<b>Measure unit qualifier</b> Indication of the unit of measurement in which weight (mass), capacity, length, area, volume or other quantity is expressed. <i>CEL Celsius</i> <i>FAH Fahrenheit</i>	C an..3

- N.B. In spite of the given field length of element e6245 (format N3) decimal marks and negative values preceded by a minus sign can be transmitted. Generally numeric data element values shall be regarded as positive unless they are preceded by a minus sign. Decimal mark and minus sign shall, however, not be counted as a character of the value when computing the maximum field length.
- Tenth degrees have to be separated by a decimal point from full degrees (e.g. 18.5).  
 Temperatures below zero have to be preceded by a minus sign (e.g. -18.5). The same applies for elements e6152 and e6162 in the RNG segment.
- For further explanation please refer to ISO 9735 'EDIFACT Application Level Syntax Rules', par. 10 'Representation of numeric data element values'.

**Segment:** **RNG** Range Details  
**Position:** 0240  
**Group:** Segment Group 3 (Equipment Details) Mandatory  
**Level:** 2  
**Usage:** Conditional (Optional)  
**Max Use:** 9  
**Purpose:** A segment to specify the transport temperature range setting of the container. To be used for container/cargo which has to be cooled or hea-ted and a temperature range is allowed

#### Data Element Summary

<u>User</u>	<u>Data</u>	<u>Component</u>	<u>Name</u>	<u>Attributes</u>
<u>Attribute</u>	<u>Element</u>	<u>Element</u>		
M	6167		<b>RANGE TYPE QUALIFIER</b> Identification of the type of range. <i>5 Temperature range</i>	M an..3
R	C280		<b>RANGE</b> Range minimum and maximum limits.	C
M		6411	<b>Measure unit qualifier</b> Indication of the unit of measurement in which weight (mass), capacity, length, area, volume or other quantity is expressed. <i>CEL Celsius</i> <i>FAH Fahrenheit</i>	M an..3
R		6162	<b>Range minimum</b> Minimum of a range. Minimum temperature according to which the cargo has been transported	C n..18
R		6152	<b>Range maximum</b> Maximum of a range. Maximum temperature according to which the cargo has been transported	C n..18

**Segment:** **SEL** Seal Number  
**Position:** 0250  
**Group:** Segment Group 3 (Equipment Details) Mandatory  
**Level:** 2  
**Usage:** Conditional (Optional)  
**Max Use:** 9  
**Purpose:** A segment identifying a seal number related to the equipment.

#### Data Element Summary

<u>User</u>	<u>Data</u>	<u>Component</u>	<u>Name</u>	<u>Attributes</u>
<u>Attribute</u>	<u>Element</u>	<u>Element</u>		
M	9308		<b>SEAL NUMBER</b> The number of a custom seal or another seal affixed to the containers or other transport unit.	M an..10
O	C215		<b>SEAL ISSUER</b> Identification of the issuer of a seal on equipment either by code or by name.	C
R		9303	<b>Sealing party, coded</b> Identification of the issuer of the seal number. <i>CA Carrier</i> <i>CU Customs</i> <i>QA Quarantine</i> <i>SH Shipper</i> <i>TO Terminal operator</i>	C an..3
X		1131	<b>Code list qualifier</b> Identification of a code list.	C an..3
X		3055	<b>Code list responsible agency, coded</b> Code identifying the agency responsible for a code list.	C an..3
X		9302	<b>Sealing party</b> Clear text, representing the name of the issuer of the seal number.	C an..35
X	4517		<b>SEAL CONDITION, CODED</b> To indicate the condition of a seal. <i>1 In right condition</i> <i>2 Damaged</i>	C an..3

**Segment:** **FTX** Free Text  
**Position:** 0260  
**Group:** Segment Group 3 (Equipment Details) Mandatory  
**Level:** 2  
**Usage:** Conditional (Optional)  
**Max Use:** 9  
**Purpose:** A segment to specify supplementary information related to the equipment, such as: -  
 blockade reason - government inspection service - container loading remarks -  
 container remarks - container order information - additional remarks concerning the  
 container - container safety convention plate - continuous examination program  
 (ACEP)  
*See Recommendation JM4/272 and Document: JM4/ITIGG/120/v.17*

#### Data Element Summary

<u>User</u>	<u>Data</u>	<u>Component</u>	<u>Name</u>	<u>Attributes</u>
<u>Attribute</u>	<u>Element</u>	<u>Element</u>		
M	4451		<b>TEXT SUBJECT QUALIFIER</b> Code specifying subject of a free text. AAA Goods description AAI General information ABS Additional conditions ACF Additional attribute information DAR Damage remarks HAN Handling instructions	M an..3
X	4453		<b>TEXT FUNCTION, CODED</b> Code specifying how to handle the text.	C an..3
D	C107		<b>TEXT REFERENCE</b> Coded reference to a standard text and its source.	C
M		4441	<b>Free text, coded</b> Free text in coded form.	M an..3

**If 4451='ACF': construction material code**

**If 4451='ABS': codes**

61	Unpacking (LCL delivery)
62	Positioning by third party
63	To be inspected
64	Requires special service
65	Requires pre-trip
66	Requires steam clean
67	Clean
68	Dirty
69	For unpacking
70	Under bond
71	Free store
72	Customs stop
73	Customs stop removed
74	Quarantine stop
75	Quarantine stop removed
76	Storage/other stop

---

77	Storage/other stop removed
78	All stops removed
79	Set aside for sale
80	Sold and awaiting delivery
81	Prepared for hides
82	Prepared for food quality
83	Prepared bulkhead
84	Prepared for quarantine inspection
85	Pretrip/steamcleaned int reefer
86	Pretripped integral reefer
87	Steamcleaned insulated
88	Steamcleaned general
89	Steamcleaned tank
90	Surveyed
91	Repaired
92	Plated
93	Prepared for milk powder
94	Prepared for rice
95	Prepared for cotton
96	Prepared for cans
97	Prepared for canned fruit
98	Prepared for dried fruit
99	Prepared for hay
100	Prepared with plastic lining
101	Prepared with varnished floor
102	Clip-on unit required
103	Generator required
104	Vent open
105	Vent closed
106	Off-hire on arrival
107	Do not accept
109	Cargo claim pending
110	Return to special port
111	CSC problem
112	Redirect elsewhere
113	Ownership problem
114	Unit is for sale
115	For fumigation
116	Keep from freezing
117	No temperature setting required
118	Live reefer
<b>SM1</b>	<b>SOLAS Method 1 – Verified Gross Mass - weighed</b>
<b>SM2</b>	<b>SOLAS Method 2 – Verified Gross Mass - calculated</b>

*Codes present conform previous manual 1.2 ITIG12!*

*For more complete list check document: JM4/ITIGG/120/v.17*

**If 4451= DAR : codes**

1	Available
2	Minor damage
3	Medium damage
4	Major damage
5	Awaiting inspection
6	Not damaged

7	Repaired
8	Damaged
9	Unknown
10	Not available

**If 4451='HAN': codes**

AB	Away from boiler
AF	Away from foodstuff
AL	Away from living quarters
BC	Block stowage
EO	Except on decktop
KC	Keep cool
NO	No overstay
OD	On deck stowage
OP	On deck protected
OT	On decktop
TS	Top stowage
UD	Under deck stowage
UT	Under deck top stowage
UW	Under waterline
RF	Equipment off-repair
RN	Equipment on-repair
SP	Equipment put aside for inspection
SQ	Equipment stuff on quay
UQ	Equipment unstuff on quay
TF	Equipment transfer from shipping line
TT	Equipment transfer to shipping line
IN	Equipment receipt
IO	Equipment left and received
CVE	Set clear for verification
CAP	Set clear for appraisal
CFU	Set clear for fumigation
CSP	Set clear for inspection
COR	Set clear for other reasons
BRS	Block order - reserved for specific order
BSO	Block order - shipper owned container
BSU	Block order - unit sold
BNC	Block order - no use for commercial announcement
RCT	Reefer order - to connect to terminal electric means and control temperature
RCD	Reefer order - to connect to diesel group and control temperature
RCO	Reefer order - to connect to clip on and control temperature
RPT	Reefer order - pre-trip inspection
RTA	Reefer order - to tank a reefer container
LLO	Load
LDI	Discharge
LBU	To be bundled
LGO	General order
LLA	Lash
LME	To be measured
LSH	Shift on the same means of transport
LST	Stick
LWE	To be weighed

---

CCN	Customs clearance not to be arranged
CCY	Customs clearance to be arranged
CON	Not containerised goods
COY	Containerised goods
DIR	Discharge directly from one means of transport to another
FC	Goods to be cooled or frozen during operation
ISH	Discharge from means of transport into a shed
LCK	Discharge from means of transport into a locker
MPN	Goods are not a marine pollutant under MARPOL
MPY	Goods are a marine pollutant under MARPOL
NC	Goods are not to be cooled or frozen during operation
ODN	Goods will not exceed dimensions of the equipment
ODY	Goods will exceed dimensions of the equipment
OQU	Discharge from means of transport onto quay
R	Restow on same means of transport
T	In transit (remain on board)
RD	Refuel diesel reefer unit
RG	Refuel gas reefer unit
1	Equipment to be sealed
2	Equipment to be dry and clean
3	Equipment to be odourless
4	Equipment to be pre-tripped
5	Equipment to be fumigated
50	Contents to be sampled on acceptance
51	Connect to reefer bridge immediately
52	Roll tarpaulins
53	Vents to be open
6	Endwalls of flatracks to be collapsed
7	Bundled flatracks to be cut
AFH	Under deck, away from heat
ALU	Limited maximum stacking height
BOT	Load at bottom of hold
C	Put aside for cleaning
COV	To be covered
CSC	Put aside for examination of CSC plate
DEU	Cargo packages are to be undone
DRY	Do not connect to reefer/porthole bridge
HTK	Load with connection to heated tanks
INB	Under deck, or on deck to be built in
KFF	Load in frost-free cell position
LPN	Loading not permitted
LPY	Loading permitted
PRE	Put near reefer bridge and pre-trip equipment
RC	Put aside for repair and cleaning
REC	Packages are to be re-composed/re-bundled
RFR	Reefer under deck
SAM	Put aside for sampling
SHN	Ship does not need to be loaded/discharged
SHY	Ship needs to be loaded/discharged
SPC	Specified cell position
SRT	To be sorted out
TAR	Put aside to roll tarpaulins before loading
TOP	Load on top layer in hold



*Codes present conform previous manual 1.2 ITIG12!  
For more complete list check document: JM4/ITIGG/120/v.17*

X	1131	<b>Code list qualifier</b>	C	an..3
		Identification of a code list.		
D	3055	<b>Code list responsible agency, coded</b>	C	an..3
		Code identifying the agency responsible for a code list.		
	5	<i>ISO (International Organization for Standardization)</i>		
		<b>If e4451 = ACF</b>		
	184	<i>ACOS (Australian chamber of shipping)</i>		
		<b>If e4451 = DAR, ABS or HAN</b>		
	SMD	<i>SMDG (Shipplanning message design group)</i>		
		<b>If e4451 = ABS (SOLAS VGM)</b>		
D	C108	<b>TEXT LITERAL</b>	C	
		Free text; one to five lines.		
M	4440	<b>Free text</b>	M	an..70
		Free text: Description/Instructions/Remarks in plain language..		
		<b>To be used only if 4451='AAA' or 'AAI'</b>		
X	4440	<b>Free text</b>	C	an..70
		Free text field available to the message sender for information.		
X	4440	<b>Free text</b>	C	an..70
		Free text field available to the message sender for information.		
X	4440	<b>Free text</b>	C	an..70
		Free text field available to the message sender for information.		
X	4440	<b>Free text</b>	C	an..70
		Free text field available to the message sender for information.		
X	3453	<b>LANGUAGE, CODED</b>	C	an..3
		Code of language (ISO 639-1988).		

N.B. This segment is not generally machine processable. Use of this segment must be agreed between partners!

**Segment:** **DGS** Dangerous Goods  
**Position:** 0270  
**Group:** Segment Group 3 (Equipment Details) Mandatory  
**Level:** 2  
**Usage:** DEPENDENT (Optional)  
**Max Use:** 9  
**Purpose:** A segment to identify the UN-number and the class of the dangerous goods loaded in the container.

#### Data Element Summary

User	Data	Component		
<u>Attribute</u>	<u>Element</u>	<u>Element</u>	<u>Name</u>	<u>Attributes</u>
R	8273		<b>DANGEROUS GOODS REGULATIONS, CODED</b> Code indicating the regulation, international or national, applicable for a means of transport. <i>IMD IMO IMDG code</i>	C an..3
R	C205		<b>HAZARD CODE</b> The identification of the dangerous goods in code.	C
M		8351	<b>Hazard code identification</b> Dangerous goods code. <i>IMDG code, e.g. '6.1'</i>	M an..7
O		8078	<b>Hazard substance/item/page number</b> Number giving additional hazard code classification of a goods item within the applicable dangerous goods regulation. <i>IMDG code page number (english version)</i>	C an..7
O		8092	<b>Hazard code version number</b> The version/revision number of date of issuance of the code used.	C an..10
O	C234		<b>UNDG INFORMATION</b> Information on United Nations Dangerous Goods classification.	C
R		7124	<b>UNDG number</b> Unique 4-digit serial number assigned within the United Nations to substances and articles contained in a list of the dangerous goods most commonly carried.	C n4
X		7088	<b>Dangerous goods flashpoint</b> Lowest temperature, in the case of dangerous goods, at which vapour from an inflammable liquid forms an ignitable mixture with air.	C an..8
D	C223		<b>DANGEROUS GOODS SHIPMENT FLASHPOINT</b> Temperature at which a vapor according to ISO 1523/73 can be ignited.	C
R		7106	<b>Shipment flashpoint</b> Temperature in centigrade determined by the closed cup test as per ISO 1523/73 where a vapour is given off that can be ignited. <i>The actual flashpoint in Celcius or Fahrenheit. For transmitting temperatures below zero or tenth degrees refer to remarks under TMP segment. If different dangerous goods with different flashpoints within one container are to be transported only the lowest flashpoint is to be given.</i>	C n3
R		6411	<b>Measure unit qualifier</b>	C an..3

		Indication of the unit of measurement in which weight (mass), capacity, length, area, volume or other quantity is expressed.		
		<i>CEL</i> <i>Celsius</i>		
		<i>FAH</i> <i>Fahrenheit</i>		
O	8339	<b>PACKING GROUP, CODED</b>	C	an..3
		Identification of a packing group by code.		
		<i>1</i> <i>Great danger</i> <b>Packing Group I</b>		
		<i>2</i> <i>Medium danger</i> <b>Packing Group II</b>		
		<i>3</i> <i>Minor danger</i> <b>Packing Group III</b>		
O	8364	<b>EMS NUMBER</b>	C	an..6
		Emergency procedures for ships carrying dangerous goods.		
O	8410	<b>MFAG</b>	C	an..4
		Medical first aid guide.		
O	8126	<b>TREM CARD NUMBER</b>	C	an..10
		The identification of a transport emergency card giving advice for emergency actions.		
O	C235	<b>HAZARD IDENTIFICATION</b>	C	
		Identification of the Orange placard required on the means of transport.		
O	8158	<b>Hazard identification number, upper part</b>	C	an..4
		The id. number for the Orange Placard (upper part) required on the means of transport.		
O	8186	<b>Substance identification number, lower part</b>	C	an4
		The number for the Orange Placard (lower part) required on the means of transport.		
O	C236	<b>DANGEROUS GOODS LABEL</b>	C	
		Markings identifying the type of hazardous goods and similar information.		
O	8246	<b>Dangerous goods label marking</b>	C	an..4
		Marking identifying the type of hazardous goods (substance), Loading/Unloading instructions and advising actions in case of emergency.		
O	8246	<b>Dangerous goods label marking</b>	C	an..4
		Marking identifying the type of hazardous goods (substance), Loading/Unloading instructions and advising actions in case of emergency.		
O	8246	<b>Dangerous goods label marking</b>	C	an..4
		Marking identifying the type of hazardous goods (substance), Loading/Unloading instructions and advising actions in case of emergency.		
X	8255	<b>PACKING INSTRUCTION, CODED</b>	C	an..3
		Code defining the quantity and the type of package in which a product is allowed to be shipped in a passenger or freight aircraft.		
X	8325	<b>CATEGORY OF MEANS OF TRANSPORT, CODED</b>	C	an..3
		Identification of the type of means of transport determined to carry particular goods, not necessarily being hazardous.		
X	8211	<b>PERMISSION FOR TRANSPORT, CODED</b>	C	an..3
		Code giving evidence that transportation of particular hazardous cargo is permitted and identifies the restrictions being put upon a particular		

transport.

- N.B. For goods with a subsidiary risk 2 methods are to be applied:
1. In DGS only elements 8273 and 8351 are to be used.
  2. Subsidiary risk should be shown in segment FTX.

**Segment:** **EQA** Attached Equipment  
**Position:** 0280  
**Group:** Segment Group 3 (Equipment Details) Mandatory  
**Level:** 2  
**Usage:** Conditional (Optional)  
**Max Use:** 9  
**Purpose:** A segment to identify clip-on units, such as: - generator sets.  
 To be used if attached equipment is used

#### Data Element Summary

<u>User</u>	<u>Data</u>	<u>Component</u>	<u>Name</u>	<u>Attributes</u>
<u>Attribute</u>	<u>Element</u>	<u>Element</u>		
M	8053		<b>EQUIPMENT QUALIFIER</b> Code identifying type of equipment. AB Chain AD Temperature recorder BL Blocks BR Barge CH Chassis CN Container FSU Forked support LAR Lashing rope RG Reefer generator RR Rail car STR Strap SW Swapbody TE Trailer TP Tarpaulin	M an..3
D	C237		<b>EQUIPMENT IDENTIFICATION</b> Marks (letters and/or numbers) identifying equipment used for transport such as a container.	C
R		8260	<b>Equipment identification number</b> Marks (letters and/or numbers) which identify equipment e.g. unit load device, number of attached equipment.	C an..17
X		1131	<b>Code list qualifier</b> Identification of a code list.	C an..3
X		3055	<b>Code list responsible agency, coded</b> Code identifying the agency responsible for a code list.	C an..3
X		3207	<b>Country, coded</b> Identification of the name of a country or other geographical entity as specified in ISO 3166.	C an..3

**Group:** **TDT** Segment Group 4: Details of Transport  
**Position:** 0290  
**Group:** Segment Group 3 (Equipment Details) Mandatory  
**Level:** 2  
**Usage:** Conditional (Optional)  
**Max Use:** 1  
**Purpose:** A group of segments to specify the planned on-carriage details in case this message is a discharge order message.

#### Segment Summary

<u>User</u>	<u>Pos.</u>	<u>Seg.</u>		<u>Req.</u>	<u>Max.</u>	<u>Group:</u>
<u>Attribute</u>	<u>No.</u>	<u>ID</u>	<u>Name</u>	<u>Des.</u>	<u>Use</u>	<u>Repeat</u>
	0300	TDT	Details of Transport	M		1
	0310	RFF	Reference	C		9
	0320	LOC	Place/Location Identification	C		9
	0330	DTM	Date/Time/Period	C		9

**Segment:** **TDT** **Details of Transport**  
**Position:** 0300 (Trigger Segment)  
**Group:** Segment Group 4 (Details of Transport) Conditional (Optional)  
**Level:** 2  
**Usage:** **Mandatory**  
**Max Use:** 1  
**Purpose:** A segment identifying the on-carriage transport details of the mode, means of transport by which the container will depart after being discharged.

#### Data Element Summary

User	Data	Component		
<u>Attribute</u>	<u>Element</u>	<u>Element</u>	<u>Name</u>	<u>Attributes</u>
M	8051		<b>TRANSPORT STAGE QUALIFIER</b>	M an..3
			Qualifier giving a specific meaning to the transport details.	
			10 Pre-carriage transport (if COPRAR – Load instr.)	
			30 On-carriage transport (if COPRAR – Discharge instr.)	
D	8028		<b>CONVEYANCE REFERENCE NUMBER</b>	C an..17
			Unique reference given by the carrier to a certain journey or departure of a means of transport (generic term).	
			<i>The vessel operator's discharge voyage number if mode of pre-carriage or on-carriage transport is a ship</i>	
R	C220		<b>MODE OF TRANSPORT</b>	C
			Method of transport code or name. Code preferred.	
R		8067	<b>Mode of transport, coded</b>	C an..3
			Coded method of transport used for the carriage of the goods.	
			1 Maritime transport (ocean)	
			2 Rail	
			3 Road	
			4 Air	
			8 Inland Water	
			9 Mode unknown	
X		8066	<b>Mode of transport</b>	C an..17
			Method of transport used for the carriage of the goods.	
R	C228		<b>TRANSPORT MEANS</b>	C
			Code and/or name identifying the type of means of transport.	
R		8179	<b>Type of means of transport identification</b>	C an..8
			Code defining the type of the means of transport being utilized.	
			11 Ship (feeder vessel/barge)	
			13 Ocean vessel	
			25 Rail	
			31 Truck	
X		8178	<b>Type of means of transport</b>	C an..17
			Description of the type of the means of transport being utilized.	
O	C040		<b>CARRIER</b>	C
			Identification of a carrier by code and/or by name. Code preferred.	
D		3127	<b>Carrier identification</b>	C an..17
			Identification of party undertaking or arranging transport of goods between named points.	

		<b>Code of the carrier.</b>		
D	1131	<b>Code list qualifier</b>	C	an..3
		Identification of a code list.		
		172 Carrier code		
D	3055	<b>Code list responsible agency, coded</b>	C	an..3
		Code identifying the agency responsible for a code list.		
		20 BIC (Bureau International des Containeurs)		
		87 Assigned by carrier		
		166 US, National Motor Freight Classification		
		Association/SCAC		
D	3128	<b>Carrier name</b>	C	an..35
		Name of party undertaking or arranging transport of goods between named points.		
		<b>This element only to be transmitted if no carrier code available</b>		
X	8101	<b>TRANSIT DIRECTION, CODED</b>	C	an..3
		Identification of the point of origin and point of direction.		
X	C401	<b>EXCESS TRANSPORTATION INFORMATION</b>	C	
X	8457	<b>Excess transportation reason, coded</b>	M	an..3
X	8459	<b>Excess transportation responsibility, coded</b>	M	an..3
X	7130	<b>Customer authorization number</b>	C	an..17
D	C222	<b>TRANSPORT IDENTIFICATION</b>	C	
		Code and/or name identifying the means of transport.		
		<b>This element group to be transmitted if a code of the means of pre-carriage or on-carriage is applicable</b>		
R	8213	<b>Id. of means of transport identification</b>	C	an..9
		Identification of the means of transport by name or number.		
		<b>Radio Call sign (if e8067 = 1 and C222/e1131 = 103)</b>		
		<b>Lloyd's Number (if e8067 = 1 and C222/e1131 =146)</b>		
		<b>Train ID (if e8067 = 2)</b>		
		<b>Truck ID (if e8067 = 3)</b>		
		<b>Air service ID (if e8067 = 4)</b>		
		<b>Barge ID (if e8067 = 8)</b>		
D	1131	<b>Code list qualifier</b>	C	an..3
		Identification of a code list.		
		103 Radio Call sign directory		
		146 Lloyd's register of ships		
X	3055	<b>Code list responsible agency, coded</b>	C	an..3
		Code identifying the agency responsible for a code list.		
O	8212	<b>Id. of the means of transport</b>	C	an..35
		Identification of the means of transport by name or number.		
		<b>Name of the vessel</b>		
X	8453	<b>Nationality of means of transport, coded</b>	C	an..3
		Coded name of the country in which a means of transport is registered.		
X	8281	<b>TRANSPORT OWNERSHIP, CODED</b>	C	an..3



**Segment:** **RFF** Reference  
**Position:** 0310  
**Group:** Segment Group 4 (Details of Transport) Conditional (Optional)  
**Level:** 3  
**Usage:** Conditional (**DEPENDENT**)  
**Max Use:** 9  
**Purpose:** A segment identifying a relevant reference number, such as: - shipping line -  
 syndicate - marketing organization - conference code.  
 Voyage number to be sent if different from vessel operator's voyage number in  
 TDT (grp4)

#### Data Element Summary

User	Data	Component		
<u>Attribute</u>	<u>Element</u>	<u>Element</u>	<u>Name</u>	<u>Attributes</u>
M	C506		<b>REFERENCE</b> Identification of a reference.	M
M		1153	<b>Reference qualifier</b> Code giving specific meaning to a reference segment or a reference number. <i>VON Voyage Number</i>	M an..3
R		1154	<b>Reference number</b> <i>Alternative voyage number of pre-carriage (COPRAR Load - 45)</i> <i>Alternative voyage number of on-carriage (COPRAR Discharge - 43)</i>	C an..35
X		1156	<b>Line number</b> Number of the line in the document/message referenced in 1154 Reference number.	C an..6
X		4000	<b>Reference version number</b> To uniquely identify a reference by its revision number.	C an..35

**Segment:** **LOC** Place/Location Identification  
**Position:** 0320  
**Group:** Segment Group 4 (Details of Transport) Conditional (Optional)  
**Level:** 3  
**Usage:** **Conditional (Optional)**  
**Max Use:** 9  
**Purpose:** A segment identifying locations related to the transport details, such as: - place of departure

## Data Element Summary

User Attribute	Data Element	Component Element	Name	Attributes
M	3227		<b>PLACE/LOCATION QUALIFIER</b> Code identifying the function of a location. 5 <i>Place of departure (pre-carriage - BGM+45 – Load)</i> 7 <i>Place of delivery (on- carriage - BGM+43 - Discharge)</i> PDS <i>Place of destination (for stowage purposes) (BGM+43)</i>	M an..3
R	C517		<b>LOCATION IDENTIFICATION</b> Identification of a location by code or name.	C
R		3225	<b>Place/location identification</b> Identification of the name of place/location, other than 3164 City name. <b>UN-Locode of ship's departure</b>	C an..25
X		1131	<b>Code list qualifier</b> Identification of a code list.	C an..3
O		3055	<b>Code list responsible agency, coded</b> Code identifying the agency responsible for a code list. 6 <i>UN</i> 9 <i>EAN</i> 112 <i>US Census</i>	C an..3
X		3224	<b>Place/location</b> Name of place/location, other than 3164 City name.	C an..17
X	C519		<b>RELATED LOCATION ONE IDENTIFICATION</b> Identification the first related location by code or name.	C
X		3223	<b>Related place/location one identification</b> Specification of the first related place/location by code.	C an..25
X		1131	<b>Code list qualifier</b> Identification of a code list.	C an..3
X		3055	<b>Code list responsible agency, coded</b> Code identifying the agency responsible for a code list.	C an..3
X		3222	<b>Related place/location one</b> Specification of the first related place/location by name.	C an..70
X	C553		<b>RELATED LOCATION TWO IDENTIFICATION</b> Identification of second related location by code or name.	C
X		3233	<b>Related place/location two identification</b> Specification of a second related place/location by code.	C an..25
X		1131	<b>Code list qualifier</b>	C an..3

---

X			Identification of a code list.		
X		3055	<b>Code list responsible agency, coded</b>	C	an..3
X			Code identifying the agency responsible for a code list.		
X		3232	<b>Related place/location two</b>	C	an..70
X			Specification of a second related place/location by name.		
X	5479		<b>RELATION, CODED</b>	C	an..3
			To specify the relationship between two or more items.		

**Segment:** **DTM** Date/Time/Period  
**Position:** 0330  
**Group:** Segment Group 4 (Details of Transport) Conditional (Optional)  
**Level:** 3  
**Usage:** Conditional (Optional)  
**Max Use:** 9  
**Purpose:** A segment to specify a date/time relating to the on-carriage transport, such as arrival or departure date/time.

## Data Element Summary

User	Data	Component		
<u>Attribute</u>	<u>Element</u>	<u>Element</u>	<u>Name</u>	<u>Attributes</u>
M	C507		<b>DATE/TIME/PERIOD</b> Date and/or time, or period relevant to the specified date/time/period type.	<b>M</b>
M		<b>2005</b>	<b>Date/time/period qualifier</b> Code giving specific meaning to a date, time or period. <i>132 Arrival date/time, estimated</i> <i>133 Departure date/time, estimated</i>	<b>M an..3</b>
R		<b>2380</b>	<b>Date/time/period</b> The value of a date, a date and time, a time or of a period in a specified representation. <i>(Estimated) Date/time of arrival</i> <i>(Estimated) Date/time of departure</i>	<b>C an..35</b>
R		<b>2379</b>	<b>Date/time/period format qualifier</b> Specification of the representation of a date, a date and time or of a period. <i>203 CCYYMMDDHHMM</i>	<b>C an..3</b>

**Segment:** **NAD** **Name and Address**  
**Position:** 0340  
**Group:** Segment Group 3 (Equipment Details) Mandatory  
**Level:** 2  
**Usage:** Conditional (Optional)  
**Max Use:** 1  
*Remark: segment occurrence can be modified to 9 on a bilateral basis to be agreed between partners.*  
**Purpose:** A segment to specify a related address or party, such as: - container operator if container operator differs from operator or shipping line service mentioned in NAD grp2

#### Data Element Summary

<u>User</u>	<u>Data</u>	<u>Component</u>	<u>Name</u>	<u>Attributes</u>
<u>Attribute</u>	<u>Element</u>	<u>Element</u>		
M	3035		<b>PARTY QUALIFIER</b> Code giving specific meaning to a party. <i>CF Container operator/lessee</i> <i>AM Authorized official – (VGM EDI signature)</i> <b>Name in capitals of Authorized person signing for verified gross mass (weight) = EDI signature</b> <i>SPC SOLAS packed container VGM responsible party</i> <b>Code as available from version D.15B:</b> <b>Party responsible for declaration of a packed container's verified gross mass (weight) according to SOLAS Chapter VI, Regulation 2, paragraphs 4-6</b>	M an..3
R	C082		<b>PARTY IDENTIFICATION DETAILS</b> Identification of a transaction party by code.	C
M		3039	<b>Party id. Identification</b> Code identifying a party involved in a transaction. <b>Carrier, coded</b>	M an..35
R		1131	<b>Code list qualifier</b> Identification of a code list. <i>160 Party Id.</i>	C an..3
R		3055	<b>Code list responsible agency, coded</b> Code identifying the agency responsible for a code list. <i>20 BIC (Bureau International des Containeurs)</i> <i>166 US, National Motor Freight Classification Association/SCAC</i> <i>ZZZ Mutually agreed</i>	C an..3
X	C058		<b>NAME AND ADDRESS</b> Unstructured name and address: one to five lines.	C
X		3124	<b>Name and address line</b> Free form name and address description.	M an..35
X		3124	<b>Name and address line</b> Free form name and address description.	C an..35
X		3124	<b>Name and address line</b> Free form name and address description.	C an..35
X		3124	<b>Name and address line</b> Free form name and address description.	C an..35

X		3124	Free form name and address description. <b>Name and address line</b>	C	an..35
O	C080		Free form name and address description. <b>PARTY NAME</b>	C	
O		3036	Identification of a transaction party by name, one to five lines. Party name may be formatted. <b>Party name</b>	M	an..35
			Name of a party involved in a transaction. <b>1. Name in capitals of the person authorized to sign the shipping document declaring a verified gross mass (weight) (In case of qualifier 'AM') = EDI signature</b> <b>2. Company name of SOLAS verified gross mass responsible party (in case of qualifier 'SPC') (optional occurrence 2) = Company of person signing for Verified Gross Mass</b>		
X		3036	Party name	C	an..35
X		3036	Party name	C	an..35
X		3036	Party name	C	an..35
X		3036	Party name	C	an..35
X		3045	Party name format, coded	C	an..3
O	C059		Specification of the representation of a party name. <b>STREET</b>	C	
O		3042	Street address and/or PO Box number in a structured address: one to three lines. <b>Street and number/p.o. box</b>	M	an..35
X		3042	Street and number in plain language, or Post Office Box No. <b>Street and number/p.o. box</b>	C	an..35
X		3042	Street and number in plain language, or Post Office Box No. <b>Street and number/p.o. box</b>	C	an..35
O	3164		Street and number in plain language, or Post Office Box No. <b>CITY NAME</b>	C	an..35
O		3229	Name of a city (a town, a village) for addressing purposes. <b>Verified Gross Mass (weight) obtained location</b> <b>COUNTRY SUB-ENTITY IDENTIFICATION</b>	C	an..9
O		3251	Identification of the name of sub-entities (state, province) defined by appropriate governmental agencies. <b>POSTCODE IDENTIFICATION</b>	C	an..9
O		3207	Code defining postal zones or addresses. <b>COUNTRY, CODED</b>	C	an..3
			Identification of the name of a country or other geographical entity as specified in ISO 3166. <b>Verified Gross Mass (weight) obtained country</b>		

**Segment:** **CNT** Control Total  
**Position:** 0350  
**Group:**  
**Level:** 0  
**Usage:** Conditional (Optional)  
**Max Use:** 1  
**Purpose:** A segment to specify the number of containers in the message, explicitly given by the sender.  
**Comments:**  
**Notes:** *Sample segment :*  
*CNT+1:1'*  
*CNT+16:25'*

## Data Element Summary

	Data Element	Component Element	Name	Attributes
M	C270		CONTROL	M 1
M		6069	Control total type code qualifier 1 <i>Algebraic total of the quantity values in line items in a message</i> 16 <i>Total number of equipment</i>	M an..3
M		6066	Control total value <i>Dummy value 1 (if e6069 = 1)</i> <i>Number of EQD segments in the message (if e6069 = 16)</i>	M n..18
X		6411	Measurement unit code	C an..3

**Segment:** **UNT** Message Trailer  
**Position:** 0360  
**Group:**  
**Level:** 0  
**Usage:** Mandatory  
**Max Use:** 1  
**Purpose:** A service segment ending a message, giving the total number of segments in the message (including the UNH & UNT) and the control reference number of the message.

**Comments:**

**Notes:** *Sample segment :*  
*UNT+32+100011544142'*

**Data Element Summary**

	<u>Data Element</u>	<u>Component Element</u>	<u>Name</u>	<u>Attributes</u>
M	0074		NUMBER OF SEGMENTS IN A MESSAGE <i>Total number of segments in the message including UNH and UNT segments, but excluding UNA, UNB and UNZ segments</i>	M 1 n..6
M	0062		MESSAGE REFERENCE NUMBER <i>Message reference identical to e0062 in UNH segment</i>	M 1 an..14



## 8. SAMPLE MESSAGE

### Example #1:LOADING order for one standard and one DG container

UNB+UNOA:2+DEHAMHLOFEPLAN+DEHAMHHLBUKAI1+950725:1122+1'	Header information
UNH+2+COPRAR:D:95B:UN:ITG12'	COPRAR loading order
BGM+45+19950000003+9'	dummy
RFF+XXX:1'	Vessel/voyage
TDT+20+4321+1++HLC:172:20+++DHEE:103::ESSEN XPR'	Port and berth of load
LOC+9+DEHAM:139:6+BK8:BER:ZZZ'	ETA
DTM+132:199507252000:203'	ETD
DTM+133:199507260830:203'	Carrier
NAD+CA+HLC:160:20'	
EQD+CN+HLCU2389855+2200:102:5+++5'	1st container
RFF+BN:0102000'	Booking number
TMD+11'	House/house
LOC+11+SGSIN:139:6'	SPOD Singapore
LOC+7+THBKK:139:6'	Final destination
MEA+AAE+G+KGM:13450'	Gross weight
SEL+6789+CU'	Customs's seal number
FTX+ABS++63::184'	To be inspected
TDT+10+3333+1+11+UNI:172:87+++DIGB:103'	Pre-carriage: feeder
LOC+5+DKAAR::6'	Place of departure
DTM+132:199507221123:203'	Cont. already delivered
EQD+CN+NYKU2038494+2200:102:5+++5'	2nd container
RFF+BN:0103000'	Booking number
RFF+CV:7'	DG reference number
TMD+11'	House/house
LOC+11+SGSIN:139:6'	SPOD Singapore
MEA+AAE+G+KGM:8300'	Gross weight
SEL+780+CA'	Carrier's seal number
FTX+AAA+++DIACETYL'	Commodity
DGS+IMD+3.2+2346+55:CEL'	Dangerous goods info
TDT+10+++3+31+:::SCHENKER+++HH-MM 22'	Pre-carriage: truck
LOC+5+DEKEL::6'	Place of departure Kiel
DTM+132:199507252200:203'	
NAD+CF+NYK:160:20'	Container operator
CNT+1:1'	Dummy
UNT+34+2'	
UNZ+1+1'	

## Example #2:LOADING order for one standard container with VGM - verified gross mass

UNB+UNOA:2+DEHAMHLOFEPLAN+DEHAMHHLBUKAI1+950725:1122+1'	Header information
UNH+2+COPRAR:D:95B:UN:ITG12'	COPRAR loading order
BGM+45+19950000003+9'	dummy
RFF+XXX:1'	Vessel/voyage
TDT+20+4321+1++HLC:172:20+++DHEE:103::ESSEN XPR'	Port and berth of loading
LOC+9+DEHAM:139:6+BK8:BER:ZZZ'	ETA
DTM+132:199507252000:203'	ETD
DTM+133:199507260830:203'	Carrier
NAD+CA+HLC:160:20'	1st container
EQD+CN+HLCU2389855+2200:102:5+++5'	Booking number
RFF+BN:0102000'	house/house
TMD+11'	POD Singapore
LOC+11+SGSIN:139:6'	Final destination Bangkok
LOC+7+THBKK:139:6'	Verified Gross Mass
MEA+AAE+VGM+KGM:14350'	Customs seal number
SEL+6789+CU'	VGM obtained by weighing
FTX+ABS++SM1'	Pre-carriage: feeder ship
TDT+10+3333+1+11+UNI:172:87+++DIGB:103'	Place of departure Aarhus
LOC+5+DKAAR::6'	Cont. already delivered
DTM+132:199507221123:203'	Authorized person VGM
NAD+AM+++JOHN DILINGER'	Dummy
CNT+1:1'	
UNT+22+2'	
UNZ+1+1'	

**Example #3: DISCHARGE order for one overheight and one reefer container**

UNB+UNOA:2+DEHAMHLOFEPLAN+DEHAMHHLBUKAI1+950725:1122+1'	
UNH+2+COPRAR:D:95B:UN:ITG12'	Header information
BGM+43+19950000003+9'	COPRAR discharge order
RFF+XXX:1'	dummy
TDT+20+345+1+++HLC:172:20+++DHEE:103::ESSEN XPR'	Vessel/voyage
LOC+11+DEHAM:139:6+BK6:BER:ZZZ	'Port and berth of discharge
DTM+132:199507252000:203'	ETA
DTM+133:199507260830:203'	ETD
NAD+CA+HLC:160:20'	Carrier
EQD+CN+HLCU2603437+2250:102:5+++5'	1st container
RFF+BN:0102000'	Booking number
TMD+33'	pier/pier
LOC+9+SGSIN:139:6'	POL Singapore
LOC+147+0330406'	Stowage cell onboard
MEA+AAE+G+KGM:11490'	Gross weight
DIM+9+CMT:::55'	55 cm overheight
SEL+6789+CU'	Customs's seal number
FTX+AAA+++MACHINE PARTS'	Commodity
TDT+30+3333+1+11+UNI:172:87+++DIGB:103'	On-carriage: feeder ship
LOC+7+DKCPH:139:6'	Final destination Copenhagen
DTM+133:199507261100:203'	To be delivered tomorrow
EQD+CN+ICSU5306315+2230:102:5+++5'	2nd container
RFF+BN:0103000'	Booking number
TMD+11'	house/house
LOC+9+SGSIN:139:6'	POL Singapore
LOC+147+0330404'	Stowage cell onboard
MEA+AAE+G+KGM:8300'	Gross weight
TMP+2+-18.5:CEL'	Transport temperature
FTX+AAA+++FROZEN FISH'	Commodity
TDT+30++3+31'	On-carriage: truck
LOC+7+DEKEL::6'	Final destination Kiel
NAD+CF+NYK:160:20'	Container operator
CNT+1:1'	dummy
UNT+33+2'	Reference to UNH
UNZ+1+1'	Reference to UNB

**Example #4: DISCHARGE order for 2 break bulk pieces where piece #1 is stowed on two platforms and piece #2 is stowed without supporting equipment**

UNB+UNOA:2+DEHAMTCSSTCENT+DEHAMHHLBUKAI1+950725:1122+1'	Header information
UNH+2+COPRAR:D:95B:UN:ITG12'	COPRAR discharge order
BGM+43+19950000004+9'	dummy-
RFF+XXX:1'	Vessel
TDT+20+4444+1++BSC:172:20+++UJDB:103'	Port of discharge
LOC+11+DEHAM:139:6'	ETA
DTM+132:199507252000:203'	ETD
DTM+133:199507260830:203'	Carrier
NAD+CA+BCL:160:20'	1st uncon piece
EQD+BB+++++5'	Booking number
RFF+BN:121212'	house/house
TMD+11'	POL Singapore
LOC+9+SGSIN:139:6'	1st stowage cell onboard
LOC+147+0090482'	2nd stowage cell onboard
LOC+147+0090682'	Gross weight
MEA+AAE+G+KGM:18450'	Uncon dimensions
DIM+1+CMT:550:345:166'	Commodity
FTX+AAA+++CRANE WHEELS'	1st platform
EQA+CN+MMMU0059663'	2nd platform
EQA+CN+MMMU0110385'	On-carriage: railway
TDT+30++2+25'	Final destination Munich
LOC+7+DEMUC::6'	To be delivered in 4 days
DTM+133:199507290000:203'	2nd uncon piece
EQD+BB+++++5'	Booking number
RFF+BN:232323'	house/house
TMD+11'	POL Hongkong
LOC+9+HKHKG:139:6'	1st stowage cell onboard
LOC+147+0010182'	2nd stowage cell onboard
LOC+147+0030182'	3rd stowage cell onboard
LOC+147+0050182'	Gross weight
MEA+AAE+G+KGM:21100'	Uncon dimensions
DIM+1+CMT:930:280:485'	Commodity
FTX+AAA+++YACHT'	dummy
CNT+1:1'	Reference to UNH
UNT+34+2'	Reference to UNB
UNZ+1+1'	